



“T” TERMINAL FOR ROD

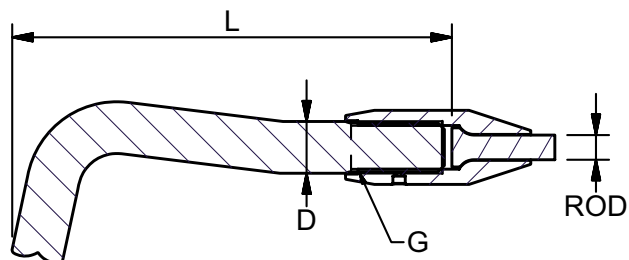
High Polished Stainless Steel - AISI 316

ART. NO.	ROD Ø MM	DASH	THREAD G	L	D	KG/100	PACK
TT716005M*	5,0	6	7/16"	106,5	12,58	15,1	BULK
TT716057M*	5,7	8	7/16"	106,5	12,58	15,1	BULK
TT012057M*	5,7	8	1/2"	106,5	12,58	17,3	BULK
TT716006M*	6,0	9	7/16"	106,5	12,58	15,1	BULK
TT012006M*	6,0	9	1/2"	106,5	12,58	17,3	BULK
TT012064M*	6,0	10	1/2"	106,5	12,58	17,3	BULK
TT012071M*	7,1	12	1/2"	116,5	14,2	20,7	BULK
TT058071M**	7,1	12	5/8"	141,5	16,0	34,0	BULK
TT058075M**	7,5	15	5/8"	141,5	16,0	34,0	BULK
TT058008M**	8,0	16	5/8"	156,5	17,8	41,7	BULK
TT058084M**	8,4	17	5/8"	156,5	17,8	41,7	BULK

Note: Rod in various lengths are available on request.

The user is responsible for choosing the proper rod diameter, and for correct assembly.

Use back plates 616107 for *, and 616110 for **, or refer to page 26.



AD Boats Ltd.

AD Boats in Croatia produces the very popular range of Salona yachts.

The upcoming shipyard has already achieved widespread acclaim, with the "Yacht of the year 2007" title for the very popular Salona 37.

The newly introduced Salona 34 is also nominated for the "yacht of the year 2008" title.

AD Boats Ltd offers a range of 5 different yachts, ranging from 34" to 45".

Blue Wave delivers a complete range of rod fittings for the Salona Yachts.



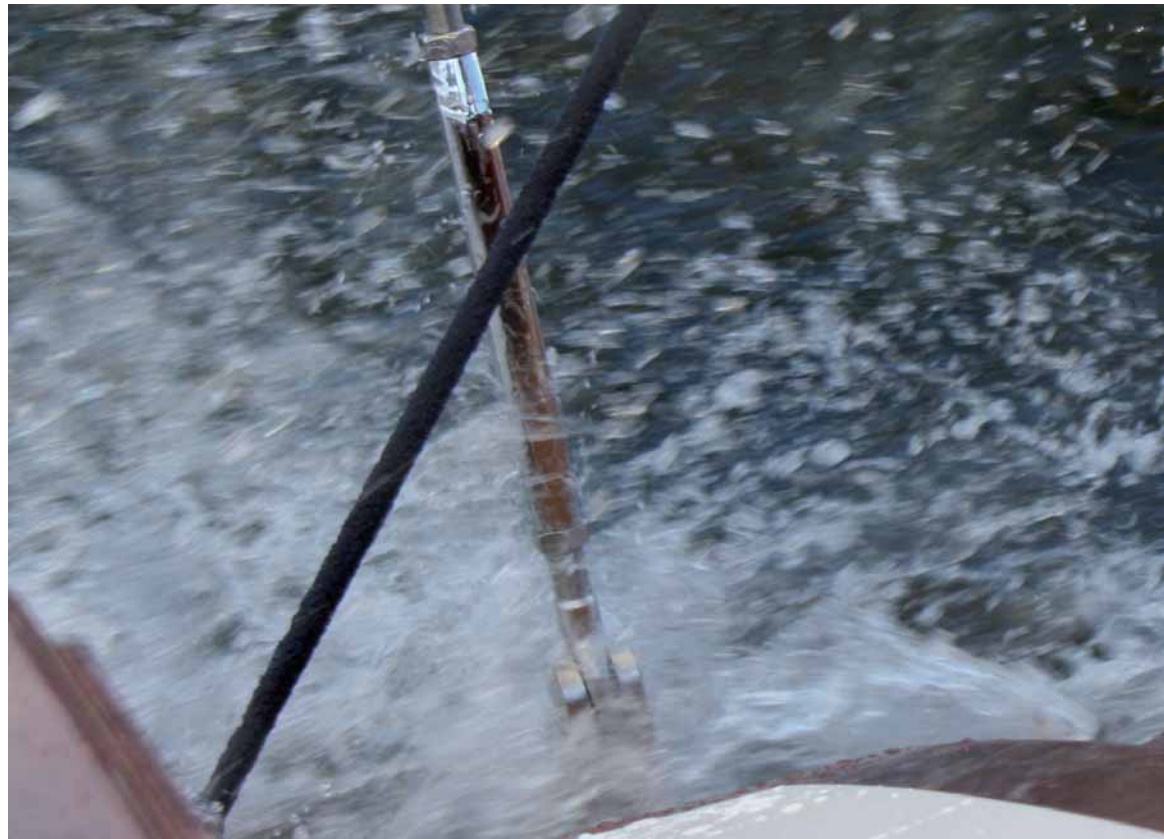
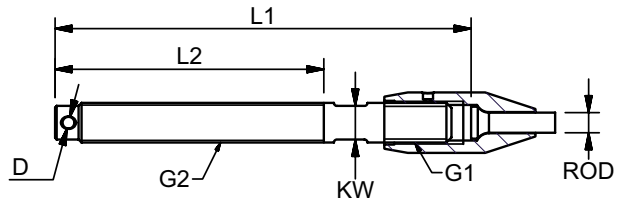
MARINE
RIGGING HARDWARE

STUD TERMINAL FOR ROD

High Polished Stainless Steel - AISI 316

ART. NO. RIGHT	ART. NO. LEFT	ROD MM	DASH	THREAD G1	THREAD G2	L1	L2	D	KW	KG/100	PACK
SR516003M	SL516003M	3,0	1	5/16"	5/16"	84,5	57,0	2,2	6	4,5	BULK
SR516004M	SL516004M	4,0	3	5/16"	5/16"	84,5	57,0	2,2	6	4,5	BULK
SR038004M	SL038004M	4,0	3	3/8"	3/8"	93,5	63,0	2,2	7	8,6	BULK
SR038005M	SL038005M	5,0	6	3/8"	3/8"	93,5	63,0	2,2	7	8,6	BULK
SR716005M	SL716005M	5,0	6	7/16"	7/16"	103,5	70,0	2,2	8	9,6	BULK
SR716057M	SL716057M	5,7	8	7/16"	7/16"	103,5	70,0	2,2	8	9,6	BULK
SR012057M	SL012057M	5,7	8	1/2"	1/2"	119,5	80,0	2,8	10	14,3	BULK
SR716006M	SL716006M	6,0	9	7/16"	7/16"	103,5	70,0	2,2	8	9,6	BULK
SR012006M	SL012006M	6,0	9	1/2"	1/2"	119,5	80,0	2,8	10	14,3	BULK
SR012064M	SL012064M	6,4	10	1/2"	1/2"	119,5	80,0	2,8	10	14,3	BULK
SR012071M	SL012071M	7,1	12	1/2"	1/2"	119,5	80,0	2,8	10	14,2	BULK
SR058071M	SL058071M	7,1	12	5/8"	5/8"	146,5	100,0	3,5	13	27,8	BULK
SR058075M	SL058075M	7,5	15	5/8"	5/8"	146,5	100,0	3,5	13	27,8	BULK
SR058008M	SL058008M	8,0	16	5/8"	5/8"	146,5	100,0	3,5	13	28,0	BULK
SR058084M	SL058084M	8,4	17	5/8"	5/8"	146,5	100,0	3,5	13	27,7	BULK
SR034084M	SL034084M	8,4	17	3/4"	5/8"	171,5	120,0	3,5	17	43,1	BULK
SR343484M	SL343484M	8,4	17	3/4"	3/4"	176,5	120,0	3,5	17	46,3	BULK
SR034095M	SL034095M	9,5	22	3/4"	3/4"	176,5	120,0	3,5	17	46,1	BULK
SR078111M	SL078111M	11,1	30	7/8"	7/8"	191,5	140,0	3,5	19	69,0	BULK
SR100127M	SL100127M	12,7	40	1"	1"	241,5	170,0	3,5	22	114,3	BULK

The user is responsible for choosing the proper rod diameter and for correct assembly.

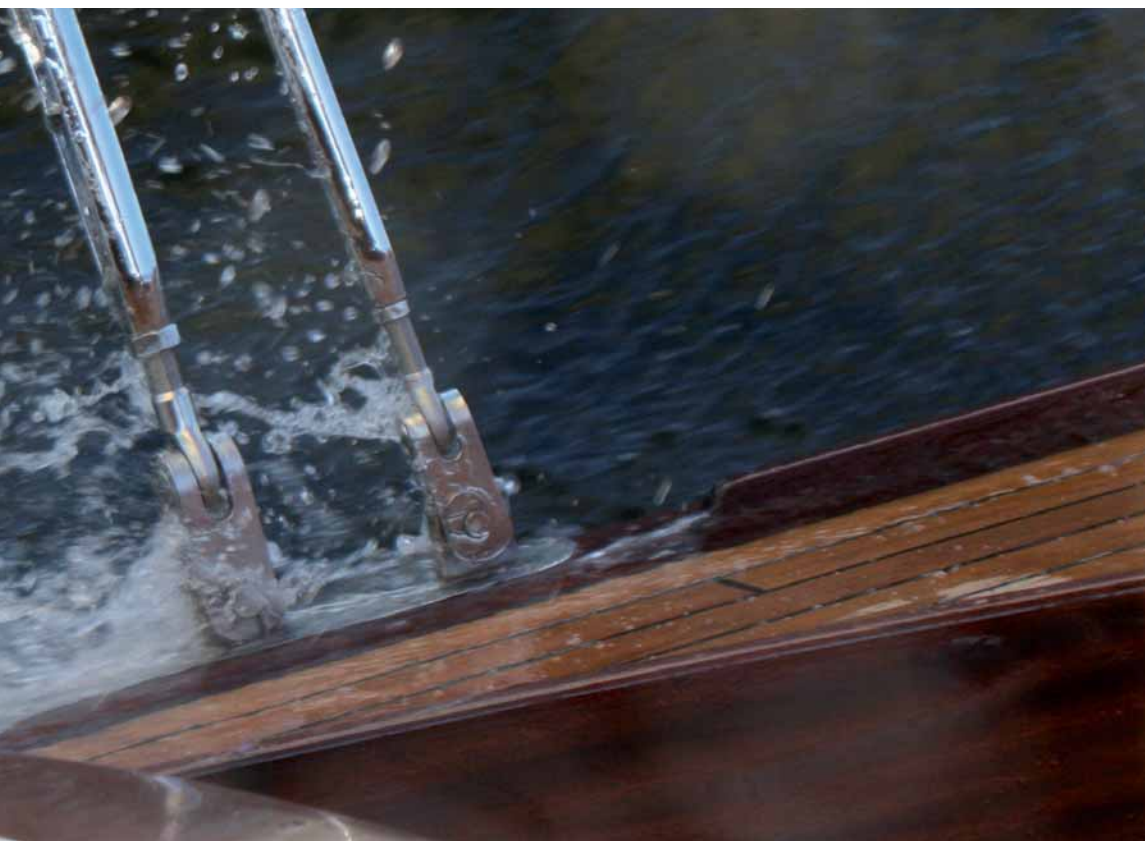
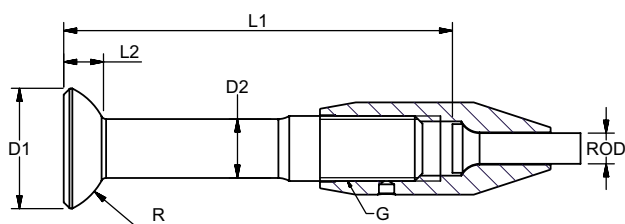


BALL TERMINAL FOR ROD

High Polished Stainless Steel - AISI 316

ART. NO.	ROD Ø MM	DASH	THREAD G	L1	L2	D1	D2	R	KG/100	PACK
BA516003M	3,0	1	5/16"	53,5	5,9	16,8	10,0	9,0	5,9	BULK
BA038004M	4,0	3	3/8"	59,0	5,9	16,8	8,5	9,0	6,5	BULK
BA516004M	4,0	3	5/16"	53,5	5,9	16,8	10,0	9,0	6,5	BULK
BA038005M	5,0	6	3/8"	59,0	5,9	16,8	8,5	9,0	8,1	BULK
BA716005M	5,0	6	7/16"	61,5	6,4	19,7	10,0	11,0	8,1	BULK
BA716057M	5,7	8	7/16"	61,5	6,4	19,7	10,0	11,0	8,1	BULK
BA012057M	5,7	8	1/2"	71,5	7,2	23,2	11,5	12,0	11,6	BULK
BA716006M	6,0	9	7/16"	61,5	6,4	19,7	10,0	11,0	8,1	BULK
BA012006M	6,0	9	1/2"	71,5	7,2	23,2	11,5	12,0	11,6	BULK
BA012064M	6,4	10	1/2"	71,5	7,2	23,2	11,5	12,0	11,6	BULK
BA012071M	7,1	12	1/2"	71,5	7,2	23,2	11,5	12,0	11,5	BULK
BA058071M	7,1	12	5/8"	81,5	9,0	27,8	14,0	15,0	21,3	BULK
BA058075M	7,5	15	5/8"	81,5	9,0	27,8	14,0	15,0	21,3	BULK
BA058008M	8,0	16	5/8"	81,5	9,0	27,8	14,0	15,0	21,5	BULK
BA058084M	8,4	17	5/8"	81,5	9,0	27,8	14,0	15,0	21,2	BULK
BA034084M	8,4	17	3/4"	92,0	10,0	31,7	17,0	17,5	33,7	BULK
BA034095M	9,5	22	3/4"	91,5	10,0	31,7	17,0	17,5	33,5	BULK
BA078111M	11,1	30	7/8"	101,5	10,5	35,7	20,0	20,0	48,3	BULK
BA100127M	12,7	40	1"	111,5	10,5	38,7	23,0	22,0	73,1	BULK
BA118143M	14,3	48	1 1/8"	126	11,5	41,7	26,0	23,0	112,3	BULK
BA138168M	16,8	60	1 3/8"	136,5	12,5	46,8	32,0	25,0	192,9	BULK

The user is responsible for choosing the proper rod diameter and for correct assembly



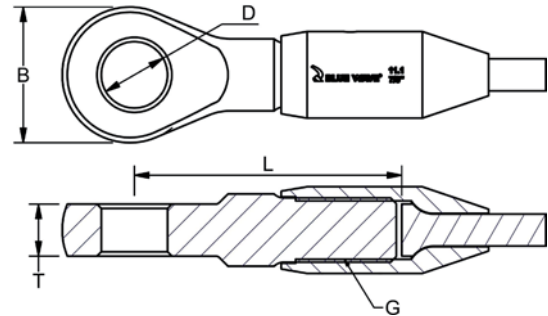


MARINE
RIGGING HARDWARE

EYE TERMINAL FOR ROD

High Polished Stainless Steel - AISI 316

ART. NO.	ROD Ø MM	DASH	THREAD G	L	B	D1	T	KG/100	PACK
EY516004M	4,0	3	5/16"	34,5	17,0	8,5	5,0	3,6	BULK
EY716005M	5,0	6	7/16"	46,5	24,0	11,5	8,0	8,3	BULK
EY716057M	5,7	8	7/16"	46,5	24,0	11,5	8,0	8,3	BULK
EY012057M	5,7	8	1/2"	56,0	28,0	13,2	10,0	12,5	BULK
EY716006M	6,0	9	7/16"	46,5	24,0	11,5	8,0	8,3	BULK
EY012006M	6,0	9	1/2"	56,0	28,0	13,2	10,0	12,5	BULK
EY012064M	6,4	10	1/2"	56,0	28,0	13,2	10,0	12,5	BULK
EY012071M	7,1	12	1/2"	56,0	28,0	13,2	10,0	12,4	BULK
EY058071M	7,1	12	5/8"	70,5	36,0	16,5	12,0	24,4	BULK
EY058075M	7,5	15	5/8"	70,5	36,0	16,5	12,0	24,4	BULK
EY058008M	8,0	16	5/8"	70,5	36,0	16,5	12,0	24,6	BULK
EY058084M	8,4	17	5/8"	70,5	36,0	16,5	12,0	24,3	BULK
EY034084M	8,4	17	3/4"	79,0	41,0	19,5	16,0	38,1	BULK
EY034095M	9,5	22	3/4"	79,0	41,0	19,5	16,0	37,9	BULK
EY078111M	11,1	30	7/8"	92,5	47,0	23,0	18,0	57,1	BULK
EY100127M	12,7	40	1"	101,5	52,0	26,0	20,0	83,1	BULK
EY118143M	14,3	48	1 1/8"	112,0	62,0	28,5	24,0	127,8	BULK
EY138168M	16,8	60	1 3/8"	125,5	68,0	32,5	30,0	212,7	BULK

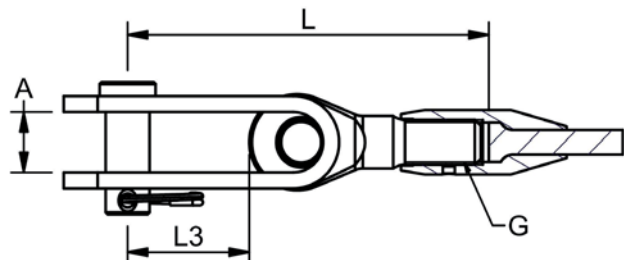


TOGGLE TERMINAL FOR ROD

High Polished Stainless Steel - AISI 316

ART. NO.	ROD Ø MM.	DASH	THREAD G	L	L3	A	PIN SIZE	KG/100	PACK
TO516004M	4,0	3	5/16"	53,0	18,0	10,0	11,0	21,2	BULK
TO716005M	5,0	6	7/16"	88,0	30,0	15,0	11,0	24,4	BULK
TO716057M	5,7	8	7/16"	88,0	30,0	15,0	11,0	24,4	BULK
TO012057M	5,7	8	1/2"	102,5	30,0	18,0	12,7	34,8	BULK
TO716006M	6,0	9	7/16"	88,0	30,0	15,0	11,0	24,4	BULK
TO012006M	6,0	9	1/2"	102,5	30,0	18,0	12,7	34,5	BULK
TO012064M	6,4	10	1/2"	102,5	30,0	18,0	12,7	34,5	BULK
TO012071M	7,1	12	1/2"	102,5	30,0	18,0	12,7	34,4	BULK
TO058071M	7,1	12	5/8"	126,5	35,0	20,0	16,0	61,3	BULK
TO058075M	7,5	15	5/8"	126,5	35,0	20,0	16,0	61,8	BULK
TO058008M	8,0	16	5/8"	126,5	35,0	20,0	16,0	61,5	BULK
TO058084M	8,4	17	5/8"	126,5	35,0	20,0	16,0	61,2	BULK
TO034095M	9,5	22	3/4"	141,0	40,0	24,0	19,0	99,9	BULK
TO078111M	11,1	30	7/8"	163,5	50,0	26,0	22,0	151,4	BULK
TO100127M	12,7	40	1"	182,5	60,0	29,0	25,4	246,5	BULK
TO118143M	14,3	48	1 1/8"	206,0	65,0	34,0	28,0	319,6	BULK
TO138168M	16,8	60	1 3/8"	233,0	75,0	40,0	32,0	371,9	BULK

Note: Rod in various lengths are available on request.
The user is responsible for choosing the proper rod diameter, and for correct assembly.



FURLER EYE TERMINAL FOR ROD

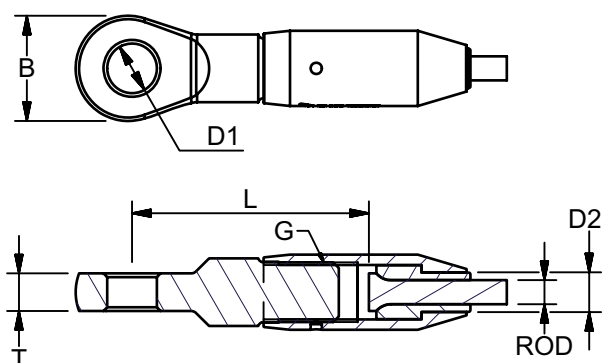
High Polished acid proof Stainless Steel

The "Furler Eye Terminal" is a highly sophisticated rod eye. It enables the rigger to fit the rod eye onto the rod after the cold heading. It can also be used to replace broken or stuck fittings without having to do a time and cost consuming replacement.

ART. NO.	ROD Ø MM.	DASH	THREAD G	L	B	D1	D2	T	KG/100	PACK
FS058060	6,0	9	5/8"	62,0	28,0	13,2	10,6	10,0	17,8	BULK
FS058064	6,4	10	5/8"	62,0	28,0	13,2	10,6	10,0	17,8	BULK
FS034071	7,1	12	3/4"	73,5	36,0	16,5	14,0	12,0	32,0	BULK
FS034074	7,5	15	3/4"	73,5	36,0	16,5	14,0	12,0	31,6	BULK
FS034080	8,0	16	3/4"	73,5	36,0	16,5	14,0	12,0	31,5	BULK
FS034084	8,4	17	3/4"	73,5	36,0	16,5	14,0	12,0	31,3	BULK
FS100095	9,5	22	1"	92,0	41,0	19,5	19,0	16,0	64,6	BULK
FS100111	11,1	30	1"	96,0	47,0	23,0	19,0	18,0	71,3	BULK

Note: Break loads are determined by rod.

The user is responsible for choosing the proper rod diameter and for correct assembly.



SIMON BOLIVAR

Superbly designed and built Simon Bolivar, though launched as recently as 1979, has become a familiar participant in Tall Ship events.

Her frequent transatlantic voyages and tours of ports in the Americas, have gained a wide following for the class "A" square-rigger.

Simon Bolivar is exclusively used as a training vessel for the Venezuelan Navy.

Fab: Astilleros Talleres Celaya
 Model Year: 1980
 BW has supplied all terminals and turnbuckles to her standing rigging.