

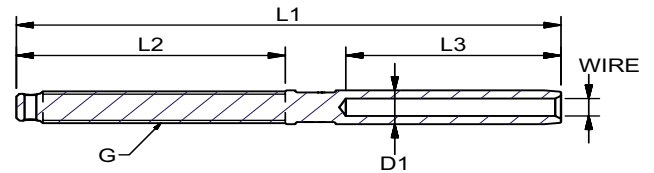


**MARINE**  
RIGGING HARDWARE

## THREAD TERMINALS UNF

*Stainless Steel - AISI 316*

The Blue Wave Thread Terminals all features, engraved wire size, Blue Wave logo, and swage depth marking for faster and easier swaging.



ART. NO. RIGHT	ART. NO. LEFT	WIRE	THREAD G	D1	L1	L2	L3	BL	KG/100	PACK	
900306A	910306A	3,0	1/8"	1/4"	6,35	100	48	38	1300 KG	2,2	BULK
900406A	910406A	4,0	5/32"	1/4"	7,5	110	48	45	1300 KG	2,5	BULK
900408A	910408A	4,0	5/32"	5/16"	7,5	117	57	45	2350 KG	3,8	BULK
900508A	910508A	5,0	3/16"	5/16"	9,0	123	57	51	2350 KG	4,0	BULK
900510A	910510A	5,0	3/16"	3/8"	9,0	130	63	51	3500 KG	5,3	BULK
900610A	910610A	6,0		3/8"	12,58	145	63	64	3500 KG	8,4	BULK
906310A	916310A		1/4"	3/8"	12,58	145	63	64	3500 KG	8,3	BULK
900611A	910611A	6,0		7/16"	12,58	157	68	64	4700 KG	10,0	BULK
900711A	910711A	7,0	9/32"	7/16"	14,2	162	68	70	4700 KG	12,7	BULK
900612A	910612A	6,0		1/2"	12,58	162	80	64	5400 KG	10,8	BULK
906312A	916312A		1/4"	1/2"	12,58	162	80	64	5400 KG	11,0	BULK
900712A	910712A	7,0	9/32"	1/2"	14,2	170	80	70	5400 KG	14,0	BULK
900812A	910812A	8,0	5/16"	1/2"	16,0	185	80	83	5400 KG	19,2	BULK
900816A	910816A	8,0	5/16"	5/8"	16,0	203	100	83	8000 KG	25,9	BULK
909516A	919516A		3/8"	5/8"	17,8	210	100	89	8000 KG	31,1	BULK
901016A	911016A	10,0		5/8"	17,8	212	100	89	8000 KG	30,1	BULK
909520A	919520A		3/8"	3/4"	17,8	230	120	89	13000 KG	38,7	BULK
901020A	911020A	10,0		3/4"	17,8	230	120	89	13000 KG	39,1	BULK
* 901220AX	911220AX	12,0		3/4"	21,4	265	120	120	13000 KG	48,6	BULK
* 901320A	911320A		1/2"	3/4"	21,4	266	120	120	13000 KG	48,6	BULK
901422A	911422A	14,0		7/8"	25,0	308	140	140	17000 KG	78,7	BULK
901625A	911625A	16,0	5/8"	1"	28,0	363	170	160	24000 KG	126,0	BULK
901927A	911927A	19,0	3/4"	1-1/8"	34,5	425	180	200	25500 KG	210,0	BULK
902230A	912230A	22,0	7/8"	1-1/4"	40,5	480	200	230	31000 KG	313,0	BULK
902636A	912636A	26,0	1"	1-3/8"	46,0	550	220	280	43000 KG	470,0	BULK

\* Note: Terminal OD. = 21,4 mm

Note: All breakloads are determined by thread.

The user is responsible for choosing the proper cable diameter and for correct assembly

Note: DRILLED FOR SPLIT PIN - ONLY UNF

For right hand thread drilled use 93 instead of 90

For left hand thread drilled use 94 instead of 91

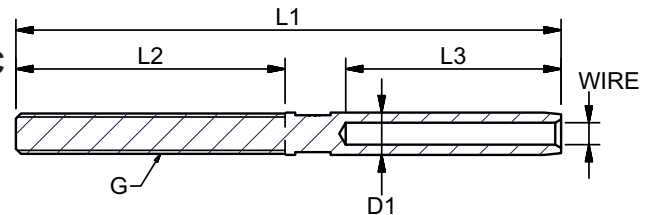
For all other measures. Please refer to Cat. No 90 & 91



## THREAD TERMINALS METRIC

*Stainless Steel - AISI 316*

The Blue Wave Thread Terminals all features, engraved wire size, Blue Wave logo, and swage depth marking for faster and easier swaging.

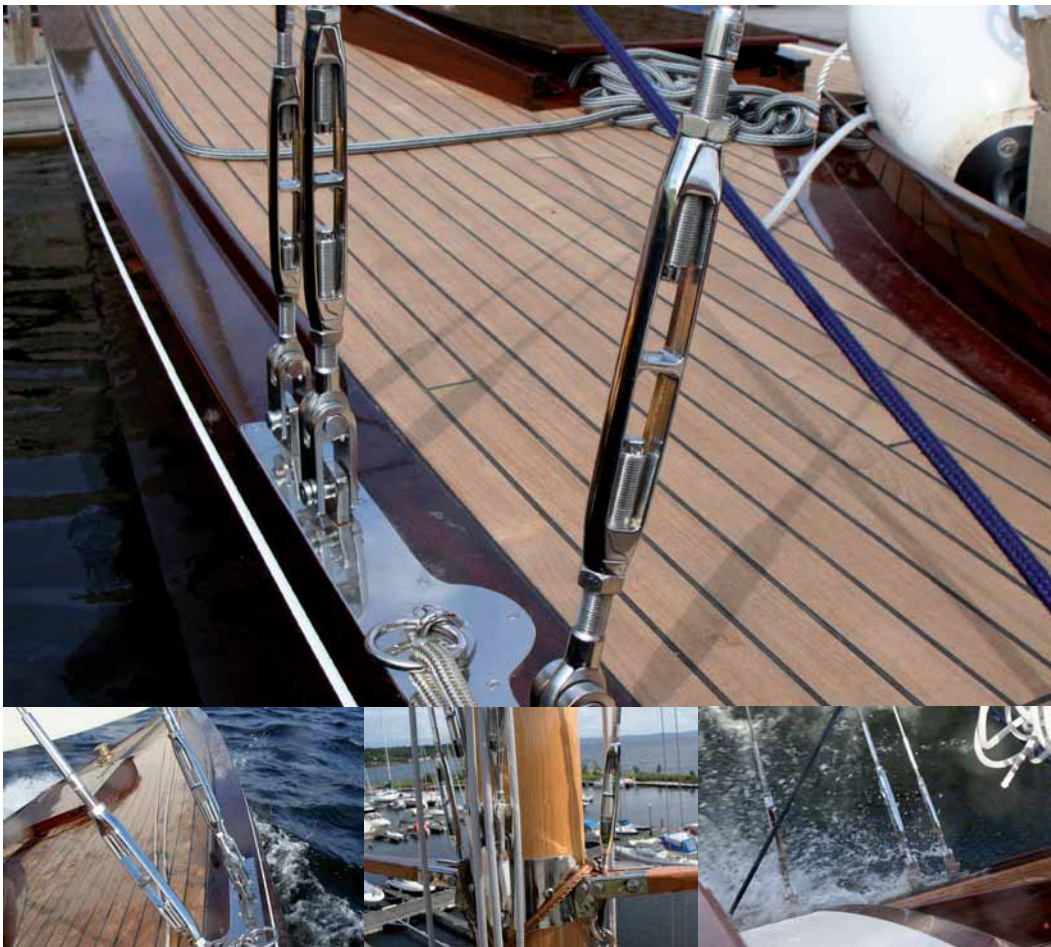


ART. NO. RIGHT	ART. NO. LEFT	WIRE	THREAD G	L1	L2	L3	D1	BL	KG/100	PACK
900205	910205	2,0	M5	87	42	32	5,5	800 KG	1,4	BULK
902505	912505	2,5	M5	87	42	32	5,5	800 KG	1,5	BULK
900306	910306	3,0	M6	100	48	38	6,35	1300 KG	2,0	BULK
900406	910406	4,0	M6	110	48	45	7,5	1300 KG	2,4	BULK
900408	910408	4,0	M8	117	57	45	7,5	2350 KG	3,0	BULK
900508	910508	5,0	M8	125	57	51	9,0	2350 KG	4,0	BULK
900510	910510	5,0	M10	130	63	51	9,0	3500 KG	4,5	BULK
900610	910610	6,0	M10	145	63	64	12,58	3500 KG	8,4	BULK
900612	910612	6,0	M12	162	80	64	12,58	5100 KG	11,0	BULK
900714	910714	7,0	M14	180	89	70	14,2	5900 KG	16,0	BULK
900816	910816	8,0	M16	203	100	83	16,0	8000 KG	23,0	BULK
901020	911020	10,0	M20	230	120	89	17,8	13000 KG	35,0	BULK
901220	911220	12,0	M20	249	120	105	20,0	13000 KG	45,0	BULK
* 901220X	911220X	12,0	M20	265	120	120	21,4	13000 KG	50,0	BULK
901422	911422	14,0	M22	308	140	140	25,0	17000 KG	76,8	BULK
901624	911624	16,0	M24	363	170	160	28,0	23000 KG	111,0	BULK

\* Note: Terminal OD. = 21,4 mm



**MARINE**  
RIGGING SYSTEM



## Restauration of the classic 9 Meter "Flirt"

"9 Meter R" built 1912 in Asker Norway of Anker & Jensen  
Rebuilt by Sollerud Stranda Kystkultur  
Refitted by Southern Cross Spars in Norway

This classic 9 Meter was due for an overhaul and the Norwegian based rigging company "Southern Cross Spars" received the commission for the rigging work.

Owner of Southern Cross Spars, Master Rigger Ed Tadzik did his utmost to keep the old wooden mast as original as possible, with handcrafted high polished stainless steel fittings, and matching high polished Chromed Bronze Rigging Screws, and other rigging hardware from Blue Wave.

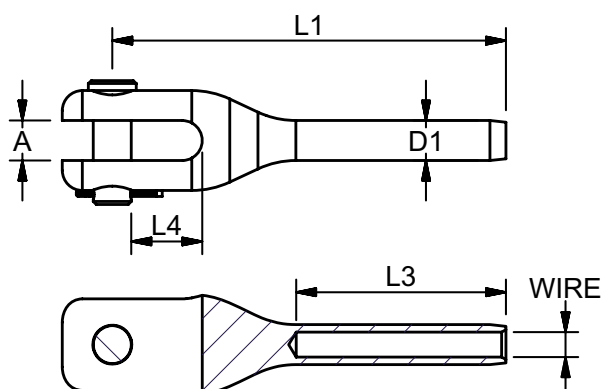
## MACHINED FORK TERMINALS

High Polished Stainless Steel - AISI 316

ART. NO.	WIRE	L1	L3	L4	D1	A	PIN SIZE	BL	KG/100 PACK	
721912	12,0	197	105	35,5	20,0	20	19,0	13000 KG	100	BULK
* 721912X	12,0	197	105	35,5	21,4	24	19,0	13000 KG	110	BULK
722214	14,0	239	140	38,0	25,0	22	22,0	17000 KG	170	BULK
722516	16,0	271	160	39,3	28,0	25	25,4	24000 KG	210	BULK
722819	19,0	327	200	41,0	34,4	30	28,0	25500 KG	330	BULK
723222	22,0	377	230	51,0	40,4	35	32,0	31000 KG	480	BULK
723526	26,0	434	280	49,5	46,0	35	35,0	43000 KG	700	BULK

Note: All break loads are determined by clevis pin.  
The user is responsible for choosing the proper cable diameter and for correct assembly.

\* Note: Terminal OD. = 21,4 mm





**MARINE**  
RIGGING HARDWARE

## WELDED FORK TERMINALS

Polished Stainless Steel - AISI 316

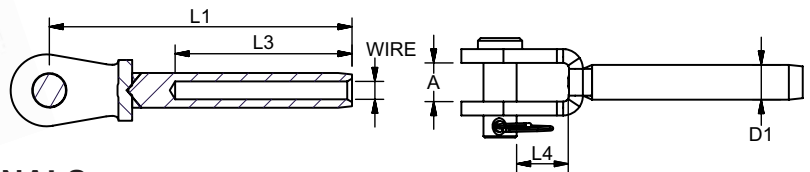
The Blue Wave Fork Terminals all features, Blue Wave logo, and swage depth marking for faster and easier swaging.

ART. NO.	WIRE	D1	L1	L3	L4	PIN SIZE	A	BL	KG/100	PACK
100502	2 1/16"	5,50	58	32	9,5	5,0	7,5	800	2,0	25
100525	2,5 3/32"	5,50	58	32	9,5	5,0	7,5	800	2,0	25
100503	3 1/8"	6,35	67	38	9,5	5,0	7,5	800	2,3	25
100603	3 1/8"	6,35	68	38	10	6,0	9,5	1300	2,8	25
106303	3 1/8"	6,35	68	38	10	6,4	9,5	1300	2,8	25
100504	4 5/32"	7,50	71	45	9,5	5,0	7,5	800	2,7	25
100604	4 5/32"	7,50	73	45	10	6,0	9,5	1300	3,4	25
100804	4 5/32"	7,50	77	45	11	8,0	11,0	2350	4,9	25
100605	5 3/16"	9,00	83	51	10	6,0	9,5	1300	4,1	25
100805	5 3/16"	9,00	87	51	11	8,0	11,0	2350	5,5	10
109505	5 3/16"	9,00	91	51	14,25	9,5	12,0	3500	7,2	10
100806	6 -	12,58	99	64	11	8,0	11,0	2350	10,0	10
109506	6 -	12,58	104	64	14,25	9,5	12,0	3500	11,3	10
101106	6 -	12,58	108	64	17,5	11,0	13,0	4700	13,9	10
101163	- 1/4"	12,58	108	64	17,5	11,0	13,0	4700	13,9	10
101206	6 -	12,58	110	64	19	12,0	14,0	5100	17,6	10
101207	7 9/32"	14,20	119	70	19	12,0	14,0	5100	18,1	10
101208	8 5/16"	16,00	136	83	19	12,0	14,0	5100	21,6	10
101308	8 5/16"	16,00	136	83	19	12,7	14,0	5100	21,6	10
101608	8 5/16"	16,00	145	83	25	16,0	18,0	9600	25,5	10
101495	- 3/8"	17,80	151	89	26	14,0	18,0	7600	35,0	10
101410	10 -	17,80	151	89	26	14,0	18,0	7600	35,0	10
101410L	10 -	17,80	149	89	22	14,0	22,0	7600	35,0	10
101610	10 -	17,80	151	89	26	16,0	18,0	7600	35,0	10
101612	12 -	20,00	174	105	25	16,0	18,0	9600	60,0	5
101612L	12 -	20,00	171	105	23	16,0	22,0	9600	60,0	5
101912	12 -	20,00	189	105	42,5	19,0	24,0	13000	66,0	5
101912L	12 -	20,00	187	105	38,5	19,0	30,0	13000	66,0	5
* 101912X	12 -	21,40	205	120	42,5	19,0	24,0	13000	75,0	5
* 101913	- 1/2"	21,40	205	120	42,5	19,0	24,0	13000	75,0	5
101914L	14 -	25,00	221	140	38,5	19,0	30,0	13000	75,0	5
102214	14 -	25,00	232	140	46	22,0	30,0	17000	112,7	5
102514	14 -	25,00	235	140	49,3	25,4	30,0	24000	125,0	5
102516	16 -	28,00	264	160	49,3	25,4	30,0	24000	140,0	5

Note: All breakloads are determined by clevis pin

The user is responsible for choosing the proper cable diameter and for correct assembly

\* Note: Terminal OD. = 21,4 mm

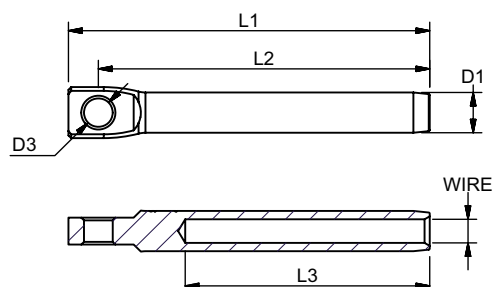


## LIFELINE TERMINALS

High Polished Stainless Steel - AISI 316

ART. NO.	WIRE	D1	L1	L2	L3	D3	KG/100	PACK
640003	3,0 1/8"	6,35	56	51	38	5,3	0,9	20
640004	4,0 5/32"	7,50	67	61	45	5,3	1,4	20

The user is responsible for choosing the proper cable diameter and for correct assembly







**MARINE**  
RIGGING SYSTEM

## EYE TERMINAL

### High Polished Stainless Steel - AISI 316

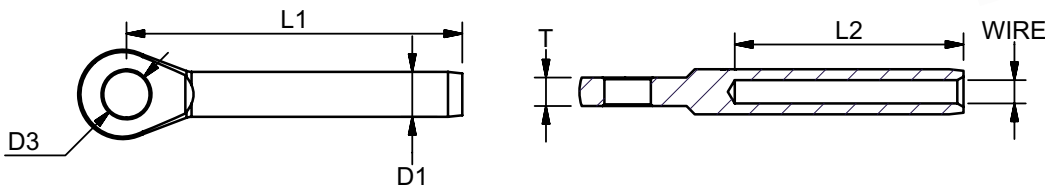
The Blue Wave Eye Terminals all features, engraved wire size, Blue Wave logo, and swage depth marking for faster and easier swaging.

ART. NO.	WIRE	D1	D3	L1	L2	T	BL	KG/100	PACK
190002	2,0 1/16"	5,5	5,5	49	32	3	800 KG	0,9	100
190025	2,5 3/32"	5,5	5,5	49	32	3	800 KG	0,8	100
190003	3,0 1/8"	6,35	6,5	58	38	4	1300 KG	1,3	100
190004	4,0 5/32"	7,5	8,5	67	45	5	2350 KG	2,3	100
190005	5,0 3/16"	9,0	10,5	79	51	6	3500 KG	3,9	25
190055	7/32"	10,8	10,5	85	59	6	3500 KG	6,0	25
190006	6,0	12,58	13,0	94	64	8	5600 KG	8,7	10
190006X	6,0	12,58	13,2	105	64	10	6200 KG	13,2	10
190063	1/4"	12,58	13,0	95	64	8	5600 KG	8,5	10
190063X	1/4"	12,58	13,2	105	64	10	6200 KG	11,0	10
190007	7,0 9/32"	14,2	13,0	104	70	9	5600 KG	11,5	10
190007X	7,0 9/32"	14,2	13,2	110	70	10	6200 KG	13,5	10
190008	8,0 5/16"	16,0	14,5	124	83	10	7600 KG	17,0	10
190008X	8,0 5/16"	16,0	16,5	141	83	12	9800 KG	23,5	10
190095	3/8"	17,8	16,3	137	89	11	9800 KG	25,3	10
190095X	3/8"	17,8	19,5	165	100	16	13000 KG	38,1	10
190010	10,0	17,8	16,3	137	89	11	9800 KG	25,0	10
190010BW	10,0	17,8	16,3	165	100	16	9800 KG	38,0	10
190010X	10,0	17,8	19,5	165	100	16	13000 KG	38,0	10
190012	12,0	20,0	19,3	156	105	15	13000 KG	41,5	5
* 190012X	12,0	21,4	19,3	178	120	15	13000 KG	41,0	5
* 190013	1/2"	21,4	19,3	178	120	15	13000 KG	41,0	5
190014	14,0	25,0	23,0	206	140	18	17000 KG	75,6	5
190016	16,0 5/8"	28,0	26,0	232	160	20	24000 KG	102,0	5
190019	19,0	34,5	28,5	302	200	25	27000 KG	209,0	BULK
190022	22,0	40,4	33,0	348	230	30	31000 KG	314,0	BULK
190026	26,0	46,0	36,0	400	280	30	43000 KG	425,0	BULK

Note: All breakloads are determined by eye (D3)

The user is responsible for choosing the proper cable diameter and for correct assembly

\* Note: Terminal OD. = 21,4 mm



## ESMERALDA

The Chilean Navy Training ship "Esmeralda" is a two time "Cutty Sark Trophy" winner.

BW has supplied turnbuckles to part of her bowsprit.

M56 threaded toggle with a resin socket, Wire: 6x36, 32mm

The Esmeralda is a brigantine of four masts with square sails at the pawl and fore-and-aft sails at the after and forward main mast and mizzen mast. The height of masts is of 48,5 m, it has 29 sails and a sail area of 2.870 m<sup>2</sup>.

Shipyard: Astilleros de Cadiz S.A  
Model Year: 1953





**MARINE**  
RIGGING HARDWARE

## REMOVABLE EYE SYSTEM

INSIDE THREADED EYES

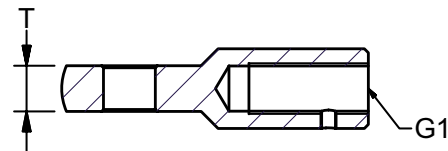
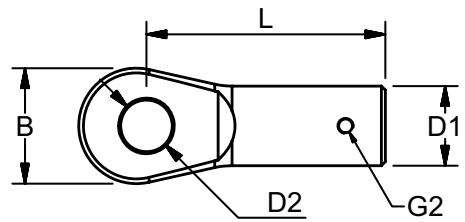
High Polished Stainless Steel - AISI 316

ART. NO.	G1	G2	L	T	B	D1	D2	BL	PACK
511908A	5/16"	M4	41	5	17	14,0	8,5	2350 KG	BULK
511910A	3/8"	M4	43,0	6,0	23,0	15,0	9,8	3500 KG	BULK
511911A	7/16"	M4	58,0	8,0	24,0	18,0	11,2	4700 KG	BULK
511912A	1/2"	M4	64,0	10	30,0	20,0	13,0	5400 KG	BULK
511916A	5/8"	M6	78,0	12,0	36,0	28,0	16,5	10000 KG	BULK
511920A	3/4"	M6	90,0	16,0	43,0	30,0	19,5	13000 KG	BULK

**NEW!**  
SIZES

Note: All breakloads are determined by clevis pin (D2) and thread.

The user is responsible for choosing the proper cable diameter and for correct assembly. incl allenscrew.



## SHORT THREAD TERMINAL

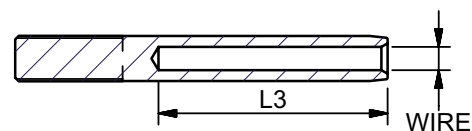
High Polished Stainless Steel - AISI 316

ART. NO.	WIRE	G	D1	L1	L2	L3	BL	PACK
* 510408	4,0	M8	7,50	73,0	12,0	45,0	2350 KG	BULK
* 510508	5,0	M8	9,0	82,0	12,0	51,0	2350 KG	BULK
510508A	5,0	5/16"	9,00	81,0	15,0	51,0	2350 KG	BULK
510510A	5,0	3/8"	9,00	82,0	20,0	51,0	3500 KG	BULK
510608	6,0	M8	12,58	96,0	12,0	64,0	2350 KG	BULK
510611A	6,0	7/16"	12,58	104,0	30,0	64,0	4700 KG	BULK
510612A	6,0	1/2"	12,58	104,0	30,0	64,0	5400 KG	BULK
510712A	7,0	1/2"	14,20	115,0	30,0	70,0	5400 KG	BULK
510816A	8,0	5/8"	16,00	123,0	30,0	83,0	5400 KG	BULK
511020A	10,0	3/4"	17,80	155,0	40,0	89,0	8000 KG	BULK
511220A	12,0	3/4"	20,00	185,0	50,0	120,0	13000 KG	BULK
511320A	1/2"	3/4"	21,40	185,0	50,0	120,0	13000 KG	BULK

Note: All breakloads are determined by thread.

The user is responsible for choosing the proper cable diameter and for correct assembly

\* With key width





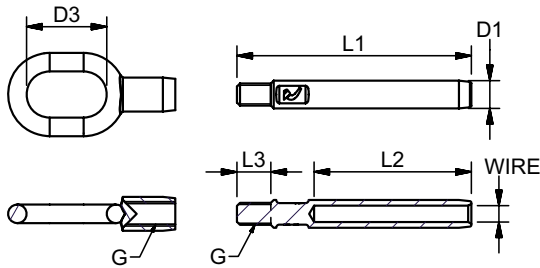
**MARINE**  
RIGGING SYSTEM

## ROPE TERMINALS

High Polished Stainless Steel - AISI 316

ART. NO.	WIRE		THREAD G	L1	L2	L3	D1	D3	KG/100	PACK
650003	3,0	1/8"	5/16"	60	38	10	6,35	26	3,9	20
650004	4,0	5/32"	5/16"	68	45	11	7,5	26	4,2	20
650005	5,0	3/16"	5/16"	76	51	11	9,0	26	4,9	20

The user is responsible for choosing the proper cable diameter and for correct assembly.



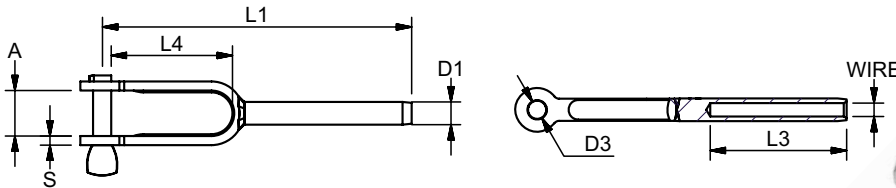
## SHACKLE TERMINAL

High Polished Stainless Steel - AISI 316

The Blue Wave Shackle Terminals all features, engraved wire size, Blue Wave logo, and swage depth marking for faster and easier swaging.

ART. NO.	WIRE		D1	D3	L1	L3	L4	A	S	KG/100	PACK
101804	4,0	5/32"	7,5	6	102	45	40	15	3	3,4	25

The user is responsible for choosing the proper cable diameter and for correct assembly



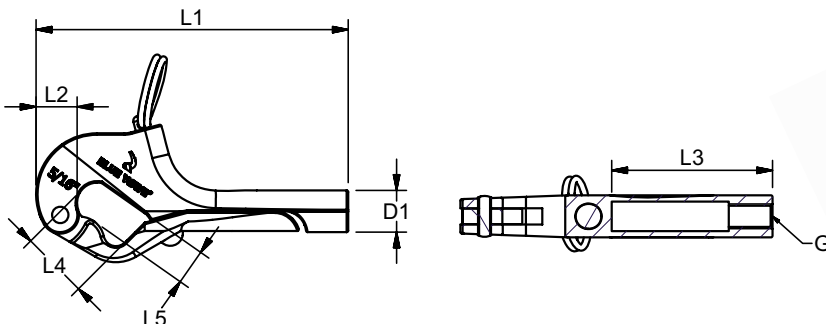
## GATE-HOOK

High Polished Stainless Steel - AISI 316

This top of the line Gate-Hook, is based on the "over the center" principal. The load is carried on the body, not on the hook, for greater safety and ease of operations.

ART. NO.	THREAD SIZE	THREAD	L1	L2	L3	L4	L5	D1	KG/100	PACK	PCS
450008	M8	RIGHT	100,0	12,2	50,0	21,0	12,0	13,3	12,6	BULK	
450008A	5/16"	LEFT	100,0	12,2	50,0	21,0	12,0	13,3	12,6	BULK	

The user is responsible for choosing the proper cable diameter and for correct assembly.





**MARINE**  
RIGGING HARDWARE

## TOGGLE TERMINALS

*High Polished Stainless Steel - AISI 316*

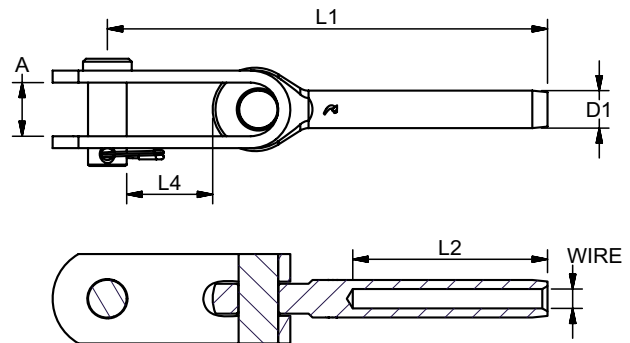
The Blue Wave Toggle Terminals all features, engraved wire size, Blue Wave logo, and swage depth marking for faster and easier swaging.

ART. NO.	WIRE	D1	PIN SIZE	L1	L2	A	L4	BL	KG/100	PACK
500603	3,0 1/8"	6,35	6,35	81	38	10	12,8	1300 KG	4,3	10
500804	4,0 5/32"	7,5	8,0	94	45	11	15,0	2350 KG	7,3	10
509505	5,0 3/16"	9,0	9,5	116	51	13	20,3	3500 KG	13,8	10
509555	7/32"	10,8	9,5	124	59	13	19,3	3500 KG	16,0	10
501106X	6,0	12,58	11,0	135	64	15	19,5	4100 KG	27,3	10
501163X	1/4"	12,58	11,0	145	64	15	19,5	4100 KG	27,1	10
501206X	6,0	12,58	12,7	151	64	18	24,7	6200 KG	33,4	5
501263X	1/4"	12,58	12,7	151	64	18	24,7	6200 KG	33,2	5
501207X	7,0 9/32"	14,2	12,7	157	70	18	24,7	6200 KG	35,7	5
501308	8,0 5/16"	16,0	12,7	170	83	18	24,7	6200 KG	37,5	5
501608X	8,0 5/16"	16,0	15,9	198	83	20	29,0	9800 KG	59,7	5
501610	10,0	17,8	15,9	192	89	20	29,0	9800 KG	64,3	5
501695	3/8"	17,8	15,9	177	89	18	22,0	9800 KG	61,2	5
501995X	3/8"	17,8	19,0	228	100	24	32,5	13000 KG	100,1	BULK
501910X	10,0	17,8	19,0	228	100	24	32,5	13000 KG	100,0	BULK
* 501912X	12,0	21,4	19,0	240	120	24	32,5	13000 KG	103,0	BULK
* 501913	1/2"	21,4	19,0	240	120	24	32,5	13000 KG	103,0	BULK
502214	14,0	25,0	22,0	277	140	26	34,9	17000 KG	170,2	BULK
502516	16,0 5/8"	28,0	25,4	313	160	29	40,3	24000 KG	265,5	BULK
502819	19,0 3/4"	34,5	28,0	399	200	34	46,5	25500 KG	512,0	BULK
503222	22,0 7/8"	40,4	32,0	463	230	40	54,0	31000 KG	570,0	BULK
503526	26,0 1"	46,0	36,0	518	280	44	62,0	43000 KG	750,0	BULK

Note: All breakloads are determined by clevis pin

The user is responsible for choosing the proper cable diameter and for correct assembly

\* Note: Terminal OD. = 21,4 mm



## HOOK TERMINALS

*High Polished Stainless Steel - AISI 316*

The Blue Wave Hook Terminals all features, engraved wire size, Blue Wave logo, and swage depth marking for faster and easier swaging.

ART. NO.	WIRE	D1	L1	L2	A	R	KG/100	PACK
630025	2,5 3/32"	6,35	68,5	32,0	12,0	8,0	1,9	20
630003	3,0 1/8"	6,35	73,0	38,0	12,0	8,0	2,0	20
630004	4,0 5/32"	7,5	90,0	45,0	18,0	11,5	3,3	20

The user is responsible for choosing the proper cable diameter and for correct assembly

