



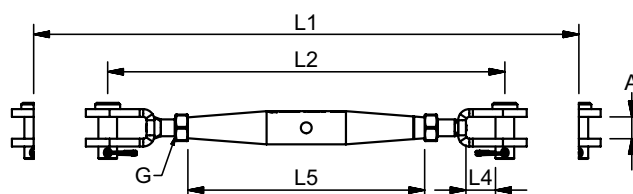
MARINE
RIGGING HARDWARE

FORK/FORK METRIC

High Polished Stainless Steel - AISI 316

The price favourable and durable Stainless Steel Rigging Screw line from Blue Wave has been a favourite among Riggers and yachtsmen for the last 50 years. It offers a variety of features. Laser engraved thread size, Blue Wave logo, and side marking of the left thread.

ART.NO.	THREAD G	L1	L2	L4	L5	A	PIN SIZE	BL	KG/100	PACK
120005	M5	180	126	9,4	80,0	7,5	5,0	800 KG	5,1	10
120006	M6	200	138	9,4	92,0	7,5	5,0	1250 KG	9,0	10
120006X	M6	202	140	10,4	92,0	9,5	6,0	1300 KG	14,0	10
120008	M8	234	158	10,4	112,0	9,5	6,0	1300 KG	15,0	10
120008X	M8	240	166	12,2	112,0	11	8,0	2350 KG	15,0	10
120010	M10	272	188	14,0	120,0	11	8,0	2350 KG	24,0	10
120010X	M10	280	196	14,0	120,0	12	9,5	3500 KG	26,0	10
120012	M12	350	244	18,5	152,0	14	12,0	5100 KG	52,5	5
120014X	M14	403	283	24,7	172,0	18	14,0	5900 KG	63,5	5
120016X	M16	446	313	24,3	192,0	18	16,0	8000 KG	100,0	5
120020	M20	550	390	38,3	223,0	24	19,0	13000 KG	197,0	BULK
120022	M22	653	472	46,0	270,0	30	22,0	17000 KG	430,0	BULK
120024	M24	769	536	47,8	320,0	30	25,4	20000 KG	638,0	BULK



FORK/TERMINAL METRIC

High Polished Stainless Steel - AISI 316

The price favourable and durable Stainless Steel Rigging Screw line from Blue Wave has been a favourite among Riggers and yachtsmen for the last 50 years. It offers a variety of features. Laser engraved thread size, Blue Wave logo, and side marking of the left thread.

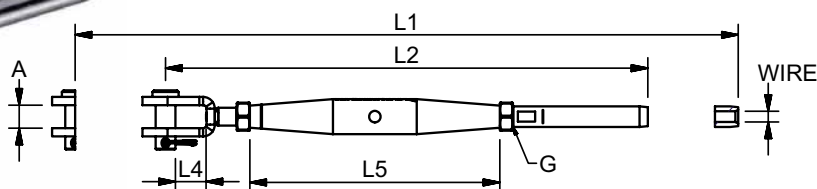
BRONZE INSERTS & KEY WITH

ART.NO.	THREAD G	WIRE	L1	L2	L4	L5	A	PIN SIZE	BL	KG/100	PACK
120205	M5	2,0	206	152	9,4	80	7,5	5,0	800 KG	4,5	10
122505	M5	2,5	206	152	9,4	80	7,5	5,0	800 KG	4,6	10
120306	M6	3,0	232	170	9,4	92	7,5	5,0	1250 KG	8,5	10
120306X	M6	3,0	233	171	10,4	92	9,5	6,0	1300 KG	8,5	10
120406	M6	4,0	242	180	10,4	92	7,5	5,0	1000 KG	8,7	10
120406X	M6	4,0	242	180	10,4	92	9,5	6,0	1300 KG	9,1	10
120408	M8	4,0	275	199	10,4	112	9,5	6,0	1300 KG	13,0	10
120408X	M8	4,0	277	201	12,2	112	11,0	8,0	2350 KG	13,0	10
120510	M10	5,0	312	228	14,0	120	11,0	8,0	2350 KG	22,5	10
120510X	M10	5,0	316	232	14,0	120	12,0	9,5	3500 KG	22,5	10
120612	M12	6,0	393	287	18,5	152	14,0	12,0	5100 KG	47,5	5
120714X	M14	7,0	447	327	24,7	172	18,0	14,0	5900 KG	58,0	5
120816X	M16	8,0	499	366	24,3	192	18,0	16,0	8000 KG	89,5	5
121020	M20	10,0	587	427	38,3	223	24,0	19,0	13000 KG	170,1	BULK
121220	M20	12,0	606	446	38,3	223	24,0	19,0	13000 KG	170,1	BULK
* 121220X	M20	12,0	622	462	38,3	223	24,0	19,0	13000 KG	170,1	BULK
121422	M22	14,0	736	556	46,0	270	30,0	22,0	17000 KG	386,0	BULK
121624	M24	16,0	874	641	47,8	320	30,0	25,4	20000 KG	662,0	BULK

* Note: Terminal OD.=21,4 mm

Note: All breakloads are determined by clevis pin and thread.

The user is responsible for choosing the proper cable diameter and for correct assembly.





MARINE
RIGGING SYSTEM

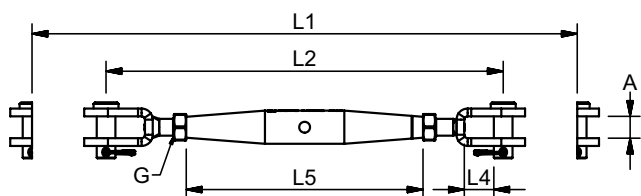
FORK/FORK UNF

High Polished Stainless Steel - AISI 316

The price favourable and durable Stainless Steel Rigging Screw line from Blue Wave has been a favourite among Riggers and yachtsmen for the last 50 years. It offers a variety of features. Laser engraved thread size, Blue Wave logo, and side marking of the left thread.

ART.NO.	THREAD G	L1	L2	L4	L5	A	PIN SIZE	BL	KG/100	PACK
120006A	1/4"	232	140	10,4	92	9,5	6,35	1300 KG	10,0	10
120008A	5/16"	242	168	12,2	112	11	8,0	2350 KG	15,0	10
120010A	3/8"	274	190	14,0	120	12	9,5	3500 KG	25,1	5
120011A	7/16"	310	219	16,5	152	12	11,0	4700 KG	35,2	5
120012A	1/2"	350	244	18,1	152	14	12,7	5400 KG	54,5	5
120016AX	5/8"	447	314	24,3	192	18	16,0	8000 KG	100,0	5
120020A	3/4"	548	388	38,3	223	24	19,0	13000 KG	197,0	BULK
120022A	7/8"	652	471	46,0	270	30	22,0	17000 KG	430,0	BULK
120025A	1"	766	536	47,8	320	30	25,4	24000 KG	643,0	BULK

Note: All break loads are determined by clevis pin and thread.
The user is responsible for choosing the proper cable diameter and for correct assembly.



BRONZE INSERTS & KEY WITH

FORK/TERMINAL UNF

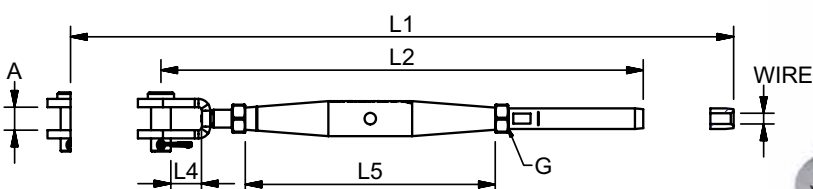
High Polished Stainless Steel - AISI 316

The price favourable and durable Stainless Steel Rigging Screw line from Blue Wave has been a favourite among Riggers and yachtsmen for the last 50 years. It offers a variety of features. Laser engraved thread size, Blue Wave logo, and side marking of the left thread.

ART.NO.	THREAD G	WIRE	L1	L2	L4	L5	A	PIN SIZE	BL	KG/100	PACK
120306A	1/4"	3,0	1/8"	233	170	10,4	70	9,5	6,35	1300 KG	8,7
120406A	1/4"	4,0	5/32"	242	180	10,4	70	9,5	6,35	1300 KG	9,0
120408A	5/16"	4,0	5/32"	275	199	12,2	112	11	8,0	2350 KG	13,3
120510A	3/8"	5,0	3/16"	306	222	14,0	120	12	9,5	3500 KG	23,2
125510A	3/8"		7/32"	314	230	14,0	120	12	9,5	3500 KG	24,5
120611A	7/16"	6,0		362	272	16,5	152	12	11,0	4700 KG	36,2
120711A	7/16"	7,0	9/32"	367	277	16,5	152	12	11,0	4700 KG	34,3
120612A	1/2"	6,0		393	287	18,1	152	14	12,7	5400 KG	46,0
126312A	1/2"		1/4"	393	287	18,1	152	14	12,7	5400 KG	46,0
120816AX	5/8"	8,0	5/16"	499	366	24,3	192	18	16,0	8000 KG	88,5
129520A	3/4"		3/8"	587	427	38,3	223	24	19,0	13000 KG	170,0
121020A	3/4"	10,0		587	427	38,3	223	24	19,0	13000 KG	170,0
121220A	3/4"	12,0		602	442	38,3	223	24	19,0	13000 KG	172,0
* 121220AX	3/4"	12,0		622	462	38,3	223	24	19,0	13000 KG	173,0
* 121320A	3/4"		1/2"	623	463	38,3	223	24	19,0	13000 KG	175,0
121422A	7/8"	14,0		736	555	46,0	270	30	22,0	17000 KG	386,0
121425A	1"	14,0		843	613	47,8	320	30	25,4	24000 KG	580,0
121625A	1"	16,0	5/8"	871	641	47,8	320	30	25,4	24000 KG	597,0

* Note: Terminal OD.=21.4mm

Note: All breakloads are determined by clevis pin and thread.
The user is responsible for choosing the proper cable diameter and for correct assembly.





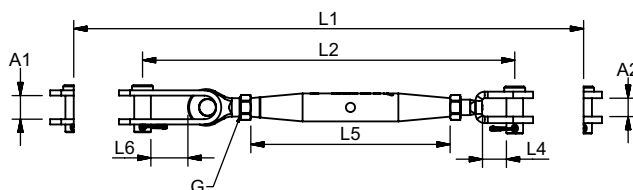
MARINE
RIGGING HARDWARE

TOGGLE/FORK UNF

High Polished Stainless Steel - AISI 316

The price favourable and durable Stainless Steel Rigging Screw line from Blue Wave has been a favourite among Riggers and yachtsmen for the last 50 years. It offers a variety of features. Laser engraved thread size, Blue Wave logo, and side marking of the left thread.

ART. NO.	THREAD G	L1	L2	L4	L5	L6	A1	A2	PIN SIZE	BL	KG/100	PACK
320006A	1/4"	222	157	10,4	92	24,5	8,0	9,5	6,35	1300 KG	10,8	10
320008A	5/16"	268	192	12,2	112	29,9	10,0	11,0	8,0	2350 KG	19,5	10
320010A	3/8"	306	222	14,0	120	39,0	12,0	12,0	9,5	3500 KG	32,5	5
320011AX	7/16"	347	257	16,5	152	43,2	15,0	12,0	11,0	4700 KG	45,0	5
320012AX	1/2"	378	272	18,1	172	49,5	18,0	14,0	12,7	5400 KG	71,0	5
320016AX	5/8"	493	361	24,3	192	59,6	20,0	18,0	16,0	8000 KG	116,0	BULK
320020AX	3/4"	582	422	38,3	223	65,9	24,0	24,0	19,0	13000 KG	207,0	BULK
320022AX	7/8"	695	515	46,0	270	72,6	26,0	30,0	22,0	17000 KG	520,0	BULK
320025AX	1"	818	589	47,8	320	87,5	29,0	30,0	25,4	24000 KG	767,7	BULK



TOGGLE/TERMINAL UNF

High Polished Stainless Steel - AISI 316

The price favourable and durable Stainless Steel Rigging Screw line from Blue Wave has been a favourite among Riggers and yachtsmen for the last 50 years. It offers a variety of features. Laser engraved thread size, Blue Wave logo, and side marking of the left thread.

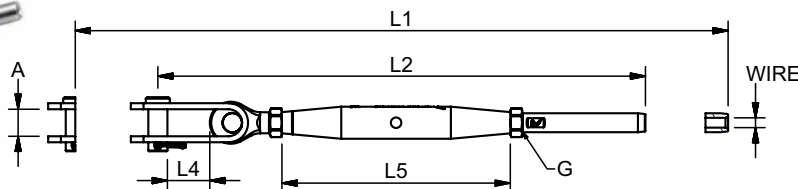
BRONZE INSERTS & KEY WITH

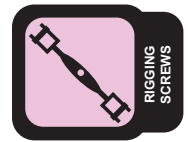
ART.NO.	THREAD G	WIRE	L1	L2	L4	L5	A	PIN SIZE	BL	KG/100	PACK	
320306A	1/4"	3,0	1/8"	253	191	24,5	92	8,0	6,35	1300 KG	10,7	10
320406A	1/4"	4,0	5/32"	263	201	24,5	92	8,0	6,35	1300 KG	11,0	10
320408A	5/16"	4,0	5/32"	304	228	29,9	112	10,0	8,0	2350 KG	16,4	10
320508A	5/16"	5,0	3/16"	310	234	29,9	112	10,0	8,0	2350 KG	16,6	10
320510A	3/8"	5,0	3/16"	342	258	39,0	120	12,0	9,5	3500 KG	28,2	5
325510A	3/8"		7/32"	350	266	39,0	120	12,0	9,5	3500 KG	30,0	5
320610A	3/8"	6,0		357	273	39,0	120	12,0	9,5	3500 KG	31,3	5
320611AX	7/16"	6,0		400	310	43,2	152	15,0	11,0	4700 KG	41,4	5
320711AX	7/16"	7,0	9/32"	405	315	43,2	152	15,0	11,0	4700 KG	41,4	5
320612AX	1/2"	6,0		421	315	49,5	152	18,0	12,7	5400 KG	64,8	5
326312AX	1/2"		1/4"	421	315	49,5	152	18,0	12,7	5400 KG	65,0	5
320712AX	1/2"	7,0	9/32"	429	323	49,5	152	18,0	12,7	5400 KG	68,0	5
320812AX	1/2"	8,0	5/16"	444	338	49,5	152	18,0	12,7	5400 KG	73,2	5
320816AX	5/8"	8,0	5/16"	545	413	59,6	192	20,0	16,0	8000 KG	105,2	BULK
329520AX	3/4"		3/8"	621	461	65,9	223	24,0	19,0	13000 KG	169,0	BULK
321020AX	3/4"	10,0		621	461	65,9	223	24,0	19,0	13000 KG	169,0	BULK
321220AX	3/4"	12,0		636	466	65,9	223	24,0	19,0	13000 KG	179,0	BULK
* 321220AXX	3/4"	12,0		656	496	65,9	223	24,0	19,0	13000 KG	179,0	BULK
* 321320AX	3/4"		1/2"	657	497	65,9	223	24,0	19,0	13000 KG	181,0	BULK
321422AX	7/8"	14,0		779	598	72,6	270	26,0	22,0	17000 KG	500,0	BULK
321625AX	1"	16,0	5/8"	923	694	87,5	320	29,0	25,4	24000 KG	742,0	BULK
321927AX	1-1/8"	19,0	3/4"	1038	778	97,6	345	34,0	28,0	25500 KG	990,0	BULK
322230AX	1-1/4"	22,0	7/8"	1172	882	110,0	375	40,0	32,0	31000 KG	1385,0	BULK
322636AX	1-3/8"	26,0	1"	1303	993	122,8	410	44,0	36,0	43000 KG	1717,0	BULK

* Note: Terminal OD. = 21,4 mm

Note: All break loads are determined by clevis pin and thread.

The user is responsible for choosing the proper cable diameter and for correct assembly.





MARINE
RIGGING SYSTEM

BALL/TERMINAL UNF

High Polished Stainless Steel - AISI 316

Chromed Bronze Body

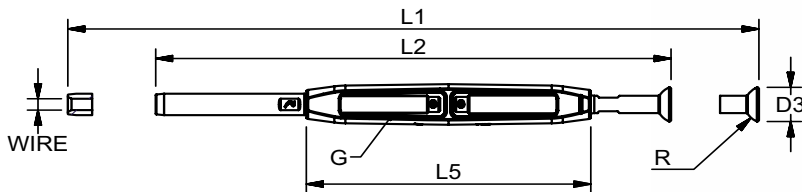
The Blue Wave Chromed Bronze Body features a number of details that makes it the best choice for exclusive and durable rigging. The sleek, open Bronze body prevents the threads from siezing up, they are delivered with laser engraved thread size, Blue Wave logo, and side marking of the left thread.

ART.NO.	THREAD G	WIRE	D3	L1	L2	L5	R	KG/100	BL	PACK	
630306A	1/4"	3	1/8"	13	244	182	100	6	10,3	1300	BULK
630408A	5/16"	4	5/32"	19	305	215	120	7	14,6	2350	BULK
630510A	3/8"	5	3/16"	19	324	240	135	7	21,5	3500	BULK
630610A	3/8"	6	-	19	339	255	135	7	24,6	3500	BULK
630611A	7/16"	6	-	20	370	280	150	7	33,6	4700	BULK
630711A	7/16"	7	9/32"	20	375	285	150	7	36,3	4700	BULK
630712A	1/2"	7	9/32"	20	415	309	170	7	49,6	5400	BULK
630812A	1/2"	8	5/16"	20	430	324	170	7	54,8	5400	BULK
630816A	5/8"	8	5/16"	25	499	367	210	10	88,7	8000	BULK
631016A	5/8"	10	-	25	508	376	210	10	92,9	8000	BULK
631220A	3/4"	12	-	28	597	437	250	14	138,8	13000	BULK
* 631220AX	3/4"	12	-	28	613	453	250	14	138,8	13000	BULK

* Note: Terminal OD. = 21,4 mm

Note: All break loads are determined by clevis pin and thread.

The user is responsible for choosing the proper cable diameter and for correct diameter and for correct assembly.



TOGGLE/TERMINAL UNF

High Polished Stainless Steel - AISI 316

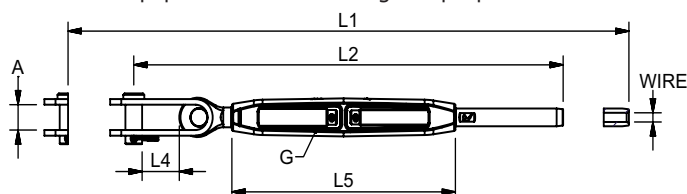
Chromed Bronze Body

ART.NO.	THREAD G	WIRE	L1	L2	L4	L5	A	PIN SIZE	BL	KG/100	PACK	
330306A	1/4"	3,0	1/8"	255	193	12,8	100	8,0	6,35	1300 KG	12,7	10
330406A	1/4"	4,0	5/32"	265	203	12,8	100	8,0	6,35	1300 KG	13,0	10
330408A	5/16"	4,0	5/32"	304	228	16,0	120	10,0	8,0	2350 KG	17,4	10
330508A	5/16"	5,0	3/16"	310	234	16,0	120	10,0	8,0	2350 KG	18,5	10
330510A	3/8"	5,0	3/16"	349	265	19,3	135	12,0	9,5	3500 KG	28,2	5
335510A	3/8"	7/32"	357	273	19,3	135	12,0	9,5	3500 KG	29,0	5	
330610A	3/8"	6,0		364	280	19,3	135	12,0	9,5	3500 KG	32,5	5
330611AX	7/16"	6,0		397	307	22,5	150	15,0	11,0	4700 KG	47,5	5
330711AX	7/16"	7,0	9/32"	408	318	22,5	150	15,0	11,0	4700 KG	47,5	5
330612AX	1/2"	6,0		425	319	24,7	170	18,0	12,7	5400 KG	74,0	5
336312AX	1/2"	1/4"	425	319	24,7	170	18,0	12,7	5400 KG	75,0	5	
330712AX	1/2"	7,0	9/32"	433	327	24,7	170	18,0	12,7	5400 KG	77,0	5
330812AX	1/2"	8,0	5/16"	448	342	24,7	170	18,0	12,7	5400 KG	82,0	5
330816AX	5/8"	8,0	5/16"	536	404	29,1	210	20,0	16,0	8000 KG	126,0	BULK
331016AX	5/8"	10,0	5/16"	545	413	29,1	210	20,0	16,0	8000 KG	135,0	BULK
339520AX	3/4"	3/8"	625	465	30,5	250	24,0	19,0	13000 KG	190,0	BULK	
331020AX	3/4"	10,0	625	465	30,5	250	24,0	19,0	13000 KG	190,0	BULK	
331220AX	3/4"	12,0	640	480	30,5	250	24,0	19,0	13000 KG	200,0	BULK	
* 331220AXX	3/4"	12,0	660	500	30,5	250	24,0	19,0	13000 KG	200,0	BULK	
* 331320AX	3/4"	1/2"	661	501	30,5	250	24,0	19,0	13000 KG	202,0	BULK	
331222AX	7/8"	12,0	786	592	34,9	305	26,0	22,0	17000 KG	311,0	BULK	
331422AX	7/8"	14,0	794	600	34,9	305	26,0	22,0	17000 KG	309,0	BULK	
331425AX	1"	14,0	932	692	40,3	366	29,0	25,4	24000 KG	512,0	BULK	
331625AX	1"	16,0	940	700	40,3	366	29,0	25,4	24000 KG	505,0	BULK	

*Note: Terminal OD. = 21,4 mm

Note: All break loads are determined by clevis pin and thread.

The user is responsible for choosing the proper cable diameter and for correct assembly.





MARINE
RIGGING HARDWARE

FORK/TERMINAL UNF

High Polished Stainless Steel - AISI 316

Chromed Bronze Body

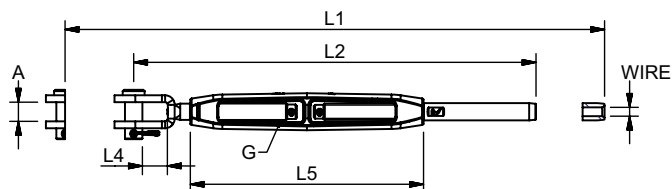
The Blue Wave Chromed Bronze Body features a number of details that makes it the best choice for exclusive and durable rigging. The sleek, open Bronze body prevents the threads from seizing up, they are delivered with laser engraved thread size, Blue Wave logo, and side marking of the left thread.

ART.NO.	THREAD G	WIRE	L1	L2	L4	L5	A	PIN SIZE	BL	KG/100	PACK	
130306A	1/4"	3,0	1/8"	236	174	10,4	100	9,5	6,35	1300 KG	10,7	10
130406A	1/4"	4,0	5/32"	246	184	10,4	100	9,5	6,35	1300 KG	11,0	10
130408A	5/16"	4,0	5/32"	280	204	12,2	120	11	8,0	2350 KG	14,5	10
130508A	5/16"	5,0	3/16"	286	210	12,2	120	11	8,0	2350 KG	14,7	10
130510A	3/8"	5,0	3/16"	317	233	14,0	135	12	9,5	3500 KG	23,2	10
135510A	3/8"		7/32"	325	241	14,0	135	12	9,5	3500 KG	24,5	10
130611A	7/16"	6,0		365	275	16,5	150	12	11,0	4700 KG	36,5	5
130711A	7/16"	7,0	9/32"	370	280	16,5	150	12	11,0	4700 KG	34,5	5
130612A	1/2"	6,0		397	291	18,1	170	14	12,7	5400 KG	55,0	5
136312A	1/2"		1/4"	397	291	18,1	170	14	12,7	5400 KG	55,0	5
130712A	1/2"	7,0	9/32"	405	299	18,1	170	14	12,7	5400 KG	55,5	5
130816AX	5/8"	8,0	5/16"	496	364	24,3	210	18	16,0	8000 KG	109,5	BULK
131016AX	5/8"	10,0		509	375	24,3	210	18	16,0	8000 KG	113,7	BULK
139520A	3/4"		3/8"	591	431	38,3	250	24	19,0	13000 KG	191,0	BULK
131020A	3/4"	10,0		591	431	38,3	250	24	19,0	13000 KG	191,0	BULK
131220A	3/4"	12,0		606	446	38,3	250	24	19,0	13000 KG	194,0	BULK
* 131220AX	3/4"	12,0		626	466	38,3	250	24	19,0	13000 KG	196,0	BULK
* 131320A	3/4"		1/2"	627	467	38,3	250	24	19,0	13000 KG	196,0	BULK
131422A	7/8"	14,0		794	600	46,0	305	26	22,0	17000 KG	304,0	BULK
131625A	1"	16,0	5/8"	940	700	47,8	366	29	25,4	24000 KG	445,0	BULK

* Note: Terminal OD. = 21,4 mm

Note: All break loads are determined by clevis pin and thread.

The user is responsible for choosing the proper cable diameter and for correct diameter and for correct assembly.

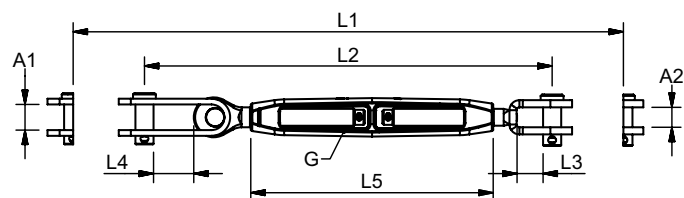


TOGGLE/FORK UNF

High Polished Stainless Steel - AISI 316

Chromed Bronze Body

ART.NO.	THREAD G	L1	L2	L3	L4	L5	A1	A2	PIN SIZE	BL	KG/100	PACK
330006A	1/4"	225	163	10,4	24,5	100	8,0	9,5	6,35	1300 KG	12,8	10
330008A	5/16"	268	192	12,2	29,9	120	10,0	11,0	8,0	2350 KG	20,5	10
330010A	3/8"	313	229	14,0	39,0	135	12,0	12,0	9,5	3500 KG	32,5	5
330011AX	7/16"	350	260	16,5	43,2	150	15,0	12,0	11,0	4700 KG	54,0	5
330012AX	1/2"	382	276	18,1	49,5	170	18,0	14,0	12,7	5400 KG	80,0	5
330016AX	5/8"	491	359	24,3	59,6	210	20,0	18,0	16,0	8000 KG	137,0	BULK
330020AX	3/4"	586	426	38,3	65,9	250	24,0	24,0	19,0	13000 KG	228,0	BULK
330022AX	7/8"	710	516	46,0	72,6	305	26,0	30,0	22,0	17000 KG	410,0	BULK
330025AX	1"	835	595	47,8	87,5	366	29,0	30,0	25,4	24000 KG	575,0	BULK



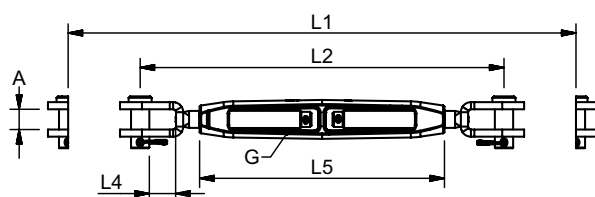
FORK/FORK UNF

High Polished Stainless Steel - AISI 316

Chromed Bronze Body

The Blue Wave Chromed Bronze Body features a number of details that makes it the best choice for exclusive and durable rigging. The sleek, open Bronze body prevents the threads from seizing up, they are delivered with laser engraved thread size, Blue Wave logo, and side marking of the left thread.

ART.NO.	THREAD G	L1	L2	L4	L5	A	PIN SIZE	BL	KG/100	PACK
130006A	1/4"	205	143	10,4	100	9,5	6,35	1300 KG	12,0	10
130008A	5/16"	244	168	12,2	120	11	8,0	2350 KG	16,0	10
130010A	3/8"	299	197	14,0	135	12	9,5	3500 KG	25,0	5
130011A	7/16"	312	222	16,5	150	12	11,0	4700 KG	35,0	5
130012A	1/2"	358	248	18,1	170	14	12,7	5400 KG	63,5	5
130016AX	5/8"	450	312	24,3	210	18	16,0	8000 KG	121,0	BULK
130020A	3/4"	562	392	38,3	250	24	19,0	13000 KG	218,0	BULK
130022A	7/8"	753	559	46,0	305	26	22,0	17000 KG	316,0	BULK
130025A	1"	888	648	47,8	366	29	25,4	24000 KG	490,0	BULK

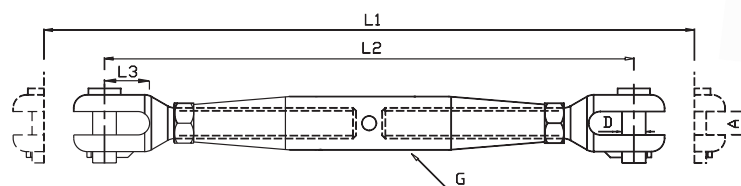


RIGGING SCREWS MACHINED FORK-FORK

High Polished Stainless Steel - AISI 316

ART. NO.	G	L1	L2	L3	A	D	B.L.	KG.	KG/100	PACK
740020	M20	619	453	45	20	19	13000	330	BULK	
740022	M22	637	456	49	22	22	17000	892	BULK	
740024	M24	763	530	52	25	25	20000	1193	BULK	
740027	M27	813	578	55	30	28	25500	1803	BULK	
740030	M30	918	656	67	35	32	31000	2614	BULK	
740036	M36	970	696	67	35	35	43000	3390	BULK	

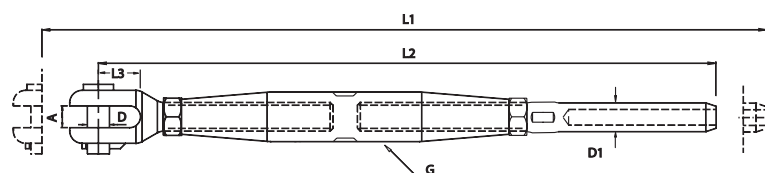
Note: All breakloads are determined by clevis pin and thread



RIGGING SCREWS MACHINED FORK-TERMINAL

High Polished Stainless Steel - AISI 316

ART. NO.	G	WIRE	L1	L2	L3	A	D	D1	B.L.	KG.
741220	M20	12	646	492	45	20	19	20	13000	
741422	M22	14	720	540	49	22	22	25	17000	
741622	M22	16	745	565	49	22	22	28	17000	
741624	M24	16	863	630	52	25	25	28	20000	
741927	M27	19	963	728	55	30	28	34,5	25500	
742230	M30	22	1082	820	67	35	32	40,5	31000	
742636	M36	26	1186	912	67	35	35	46	43000	





MARINE
RIGGING HARDWARE

MONO RACE TUNING - MRT - CALIBRATED

High Polished Stainless Steel - AISI 316

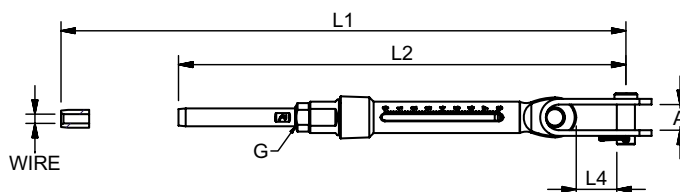
Toggle/Wire Terminal

A highly sophisticated rigging screw, from the Blue Wave racing line. It features an adjustment nut in black chromed high quality alu bronze, engraved calibration scale for fast and accurate adjustment of the rig tension and an extra length thread terminal.

ART.NO.	A	WIRE	THREAD G	L1	L2	L4	PIN SIZE	BL	PACK	KG/100	
MRT03014	8	3,0	1/8"	1/4"	233	193	13	6,35	1300 KG	BULK	11,4
MRT04014	8	4,0	5/32"	1/4"	256	216	13	6,35	1300 KG	BULK	12,2
MRT04516	10	4,0	5/16"	1/4"	271	221	16,35	8,0	2350 KG	BULK	19,2
MRT05516	10	5,0	3/16"	5/16"	277	227	16,35	8,0	2350 KG	BULK	20
MRT05038	12	5,0	3/8"	3/8"	323	263	20,65	9,5	3500 KG	BULK	35,1
MRT06716	15	6,0	7/16"	7/16"	353	283	26	11,0	4700 KG	BULK	56,3
MRT06012	18	6,0	1/2"	1/2"	414	334	27,5	12,7	5400 KG	BULK	79,9
MRT63012	18		1/4"	1/2"	414	334	27,5	12,7	5400 KG	BULK	80,4
MRT07716	18	7,0	7/16"	7/16"	375	305	27,5	11,0	4700 KG	BULK	60,2
MRT07012	18	7,0	1/2"	1/2"	422	342	27,5	12,7	5400 KG	BULK	80,5
MRT08012 *	18	8,0	1/2"	1/2"	436	356	27,5	12,7	5400 KG	BULK	84,4
MRT08058 *	20	8,0	5/8"	5/8"	510	410	32	16	8000 KG	BULK	142,8
MRT10058 *	20	10,0	5/8"	5/8"	561	461	32	16	8000 KG	BULK	146,4
MRT10034 *	24	10,0	3/4"	3/4"	598	478	34,9	19	13000 KG	BULK	260
MRT12034 *	24	12,0	3/4"	3/4"	629	509	34,9	19	13000 KG	BULK	273
MRT14078 *	26	14,0	7/8"	7/8"	698	568	36,1	22	17000 KG	BULK	420,5
MRT16110 *	29	16,0	1"	1"	820	660	46,5	25,4	24000 KG	BULK	616,4

The user is responsible for choosing the proper cable diameter and for correct assembly. The calibrated MRT turnbuckle is available up to wiresize 16mm on request. MRT's marked with "*" on request only.

COUPLING NUT BLACK CHROMED ALU- BRONZE



QUICK RACE TUNING - QRT - CALIBRATED

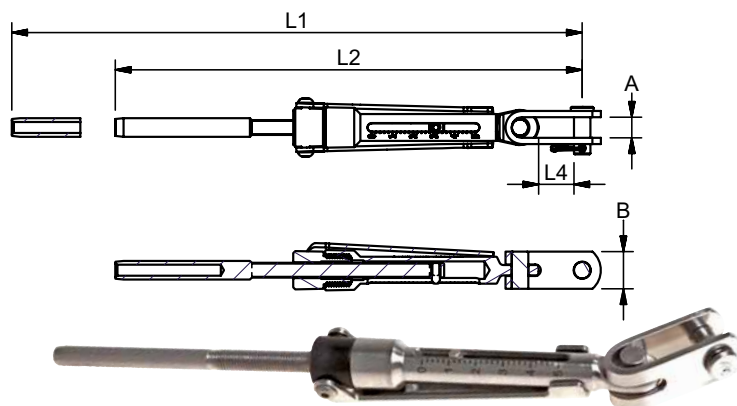
High Polished Stainless Steel - AISI 316

Toggle / Wire Terminal

The QRT is Blue Waves top racing rigging screw. Developed specifically for the hardcore racing crews. It features an adjustment nut in black chromed high quality alu bronze. Engraved calibration scale and quick adjust handle for fast and accurate tuning of the rig.

ART. NO.	WIRE	THREAD G	L1	L2	L4	A	B	PIN SIZE	BL	PACK	KG/100	
QRT04516	4,0	5/32"	5/16"	271	221	12	11	19	8	2350 KG	BULK	23,4
QRT05516	5,0	3/16"	5/16"	277	227	12	11	19	8	2350 KG	BULK	24,2
QRT06716	6,0	-	7/16"	353	283	26	11	30	10	4700 KG	BULK	60,6
QRT07716	7,0	9/32"	7/16"	375	305	28	11	30	10	4700 KG	BULK	62,7

The user is responsible for choosing the proper cable diameter and for correct assembly.





MARINE
RIGGING SYSTEM

MONO STANDARD TUNING - MST

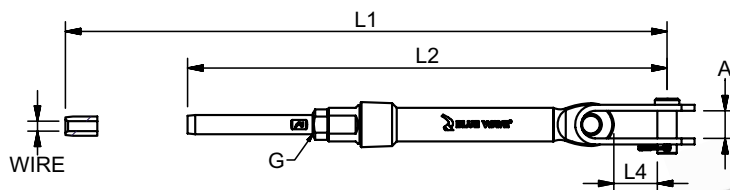
High Polished Stainless Steel - AISI 316

Toggle/Wire Terminal

A highly sophisticated rigging screw. A price favourable alternative to the Blue Wave racing line, with all the features except the calibration scale. It features an adjustment nut, in black chromed high quality alu bronze, and an extra length thread terminal.

ART. NO.	WIRE	THREAD G	A	L1	L2	L4	PIN SIZE	BL	PACK	KG/100	
MST03014	3,0	1/8"	1/4"	8	233	193	13	6,35	1300 KG	BULK	11,8
MST04014	4,0	5/32"	1/4"	8	256	216	13	6,35	1300 KG	BULK	12,6
MST04516	4,0	5/32"	5/16"	10	271	221	16,35	8,0	2350 KG	BULK	19,7
MST05516	5,0	3/16"	5/16"	10	277	227	16,35	8,0	2350 KG	BULK	20,5
MST05038	5,0	3/16"	3/8"	12	323	263	26	9,5	3500 KG	BULK	36,1
MST06716	6,0		7/16"	15	375	305	27,5	11,0	4700 KG	BULK	57,5
MST06012	6,0		1/2"	18	414	334	27,5	12,7	5400 KG	BULK	81,7
MST07716	6,0		7/16"	15	353	283	26	11,0	4700 KG	BULK	60
MST07012	7,0		1/2"	18	422	342	27,5	12,7	5400 KG	BULK	82,2
MST08012	8,0		1/2"	18	436	356	27,5	12,7	5400 KG	BULK	86,1
MST08058	8,0		5/8"	20	510	410	32	16,0	8000 KG	BULK	146,9
MST10058	10,0		5/8"	20	561	461	32	16,0	8000 KG	BULK	150,5
MST10034	10,0		3/4"	24	598	478	34,9	19,0	13000 KG	BULK	264,7
MST12034	12,0		3/4"	24	629	509	34,9	19,0	13000 KG	BULK	277,8
MST14078	14,0		7/8"	26	698	568	36,1	22,0	17000 KG	BULK	425,7
MST16110	16,0		1"	29	820	660	46,5	25,4	24000 KG	BULK	622,8

The user is responsible for choosing the proper cable diameter and for correct assembly.



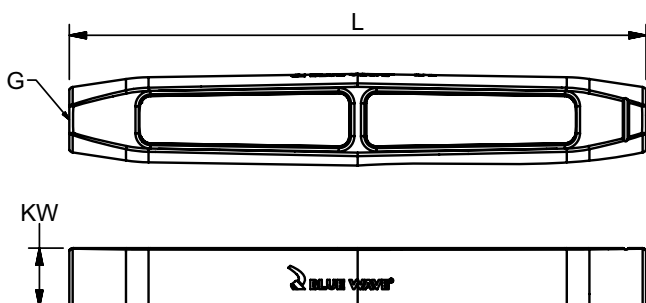
CHROMED BRONZE BODIES UNF

The Blue Wave Chromed Bronze Body features a number of details that makes it the best choice for exclusive and durable rigging. The sleek, open Bronze body prevents the threads from seizing up, they are delivered with laser engraved thread size, Blue Wave logo, and side marking of the left thread.

ART. NO.	THREAD G	L	KW	BL
011306A	1/4"	100	9,0	1300 KG
011308A	5/16"	120	11,0	2530 KG
011310A	3/8"	135	13,0	3500 KG
011311A	7/16"	150	15,0	4700 KG
011312A	1/2"	170	17,4	5400 KG
011316A	5/8"	210	20,7	8000 KG
011320A	3/4"	250	25,4	13000 KG
011322A	7/8"	305	30,0	17000 KG
011325A	1"	366	35,0	24000 KG

Note: all breakloads are determined by thread.

The user is responsible for choosing the proper cable diameter, and for correct assembly.





MARINE
RIGGING HARDWARE

STAINLESS STEEL BODIES METRIC

High Polished Stainless Steel - AISI 316

The price favourable and durable Stainless Steel Rigging Screw line from Blue Wave offers a variety of features. Laser engraved thread size, Blue Wave logo, and side marking of the left thread.

ART. NO.	THREAD G	L	D	KW	BL
011205	M5	80	8,0		800 KG
011206	M6	92	10,0		1300 KG
011208	M8	112	13,5		2350 KG
011210	M10	120	17,2		3500 KG
011212	M12	150	21,3		5100 KG
011214	M14	170	21,3		5900 KG
011216	M16	190	26,9		8000 KG
011220	M20	220	33,7		13000 KG
012320	M20	240	40,0	36	13000 KG
012322	M22	270	45,0	41	17000 KG
011224	M24	320	43,0		20000 KG
012324	M24	325	50,0	46	23000 KG
012327	M27	345	55,0	50	25500 KG
012330	M30	375	60,0	55	31000 KG
012336	M36	410	65,0	60	43000 KG

Note: All breakloads are determined by thread

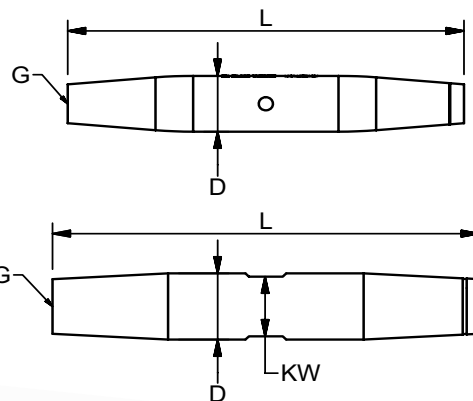
STAINLESS STEEL BODIES UNF

High Polished Stainless Steel - AISI 316

ART. NO.	THREAD G	L	D	KW	BL
011206A	1/4"	92	10,0		1300 KG
011208A	5/16"	112	13,5		2350 KG
011210A	3/8"	125	17,2		3500 KG
011211A	7/16"	150	21,3		4700 KG
011212A	1/2"	150	21,3		5400 KG
011216A	5/8"	190	26,9		8000 KG
011220A	3/4"	220	33,7		13000 KG
012322A	7/8"	270	45,0	41	17000 KG
012325A	1"	325	50,0	46	24000 KG
012327A	1 1/8"	345	55,0	50	25500 KG
012330A	1 1/4"	375	60,0	55	31000 KG
012336A	1 3/8"	410	65,0	60	43000 KG



BRONZE INSERTS & KEY WITH



Note: All breakloads are determined by thread



STAINLESS STEEL BODIES MACHINED UNF

High Polished Stainless Steel - AISI 316

Laser engraved thread size, Blue Wave logo, side marking of the left thread and chrome bronze inserts.

ART. NO.	THREAD G	L	D	BL
012310A	3/8"	125	16	3500 KG
012311A	7/16"	150	18	4700 KG
012312A	1/2"	150	20	5400 KG
012316A	5/8"	190	25	8000 KG

Note: All breakloads are determined by thread

NEWS

