



**MARINE**  
RIGGING SYSTEM

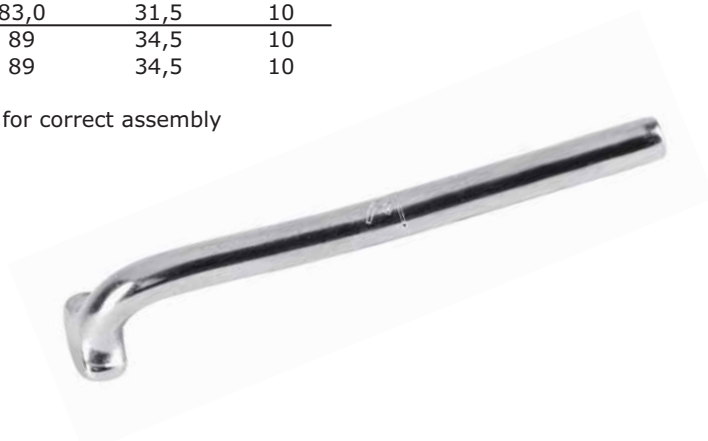
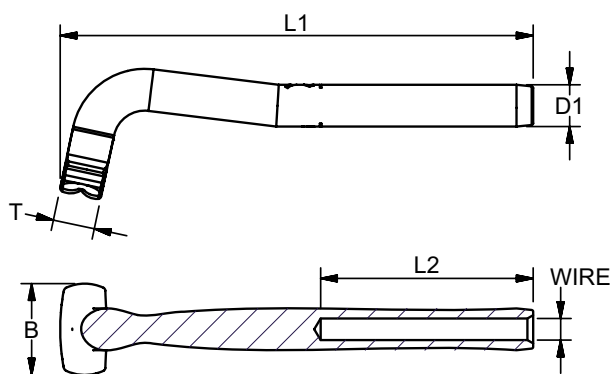
## “T” TERMINALS

### High Polished Stainless Steel - AISI 316

The Blue Wave “T” Terminals all features, engraved wire size, Blue Wave logo, and swage depth marking for faster and easier swaging.

| ART. NO. | WIRE      | L1  | D1    | B    | T     | L2   | KG/100 | PACK |
|----------|-----------|-----|-------|------|-------|------|--------|------|
| 610002   | 2,0       | 83  | 5,5   | 15,0 | 6,3   | 32   | 1,5    | 20   |
| 610025   | 2,5 3/32" | 83  | 5,5   | 15,0 | 6,3   | 32   | 1,5    | 20   |
| 610003   | 3,0 1/8"  | 88  | 6,35  | 15,0 | 6,3   | 38   | 2,0    | 20   |
| 610004   | 4,0 5/32" | 101 | 7,5   | 16,5 | 7,5   | 45   | 4,0    | 20   |
| 610005   | 5,0 3/16" | 112 | 9,0   | 18,5 | 9,0   | 51,0 | 6,5    | 20   |
| 610006   | 6,0       | 138 | 12,58 | 27,5 | 12,58 | 64   | 15,0   | 20   |
| 610063   | 1/4"      | 138 | 12,58 | 27,5 | 12,58 | 64   | 15,0   | 10   |
| 610007   | 7,0 9/32" | 144 | 14,2  | 29,0 | 14,2  | 70   | 17,0   | 10   |
| 610008   | 8,0 5/16" | 184 | 16,0  | 34,0 | 16,0  | 83,0 | 31,5   | 10   |
| 610095   | 3/8"      | 208 | 17,8  | 35,5 | 17,8  | 89   | 34,5   | 10   |
| 610010   | 10,0      | 208 | 17,8  | 35,5 | 17,8  | 89   | 34,5   | 10   |

The user is responsible for choosing the proper cable diameter and for correct assembly

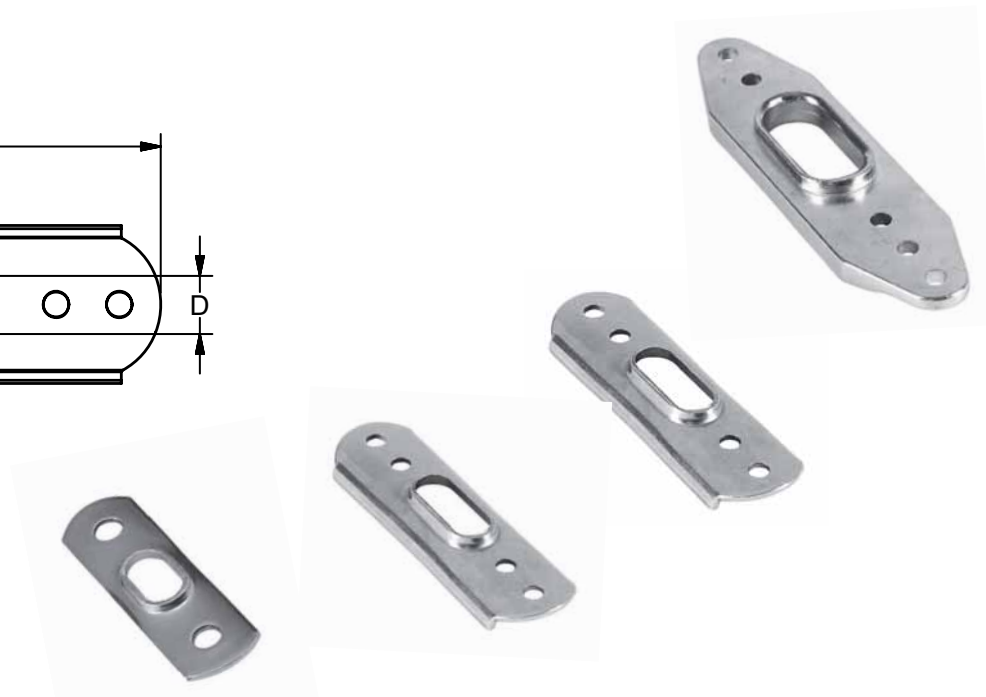
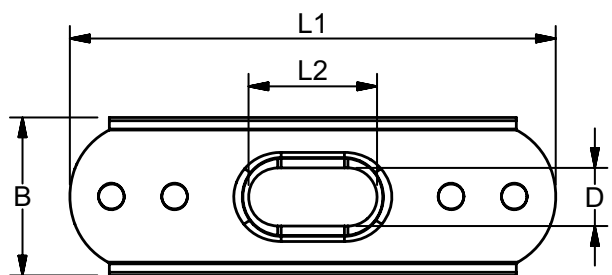


## BACK PLATES FOR “T” TERMINALS

### High Polished Stainless Steel - AISI 316

The Blue Wave “T” Terminals all features, engraved wire size, Blue Wave logo, and swage depth marking for faster and easier swaging.

| ART. NO. | WIRE DIM. | ROD DIM | L1  | L2   | B    | D    | KG/100 | PACK |
|----------|-----------|---------|-----|------|------|------|--------|------|
| 616103   | 2,0-3,0   |         | 50  | 12,5 | 15,0 | 7,0  | 0,5    | 20   |
| 616105   | 4,0-5,0   |         | 88  | 26,0 | 26,0 | 9,5  | 3,5    | 20   |
| 616107   | 6,0-7,0   | 5,0-7,1 | 123 | 32,0 | 38,0 | 15,0 | 9,0    | 20   |
| 616110   | 8,0-10,0  | 7,1-8,4 | 151 | 41,0 | 38,0 | 19,0 | 23,0   | 10   |



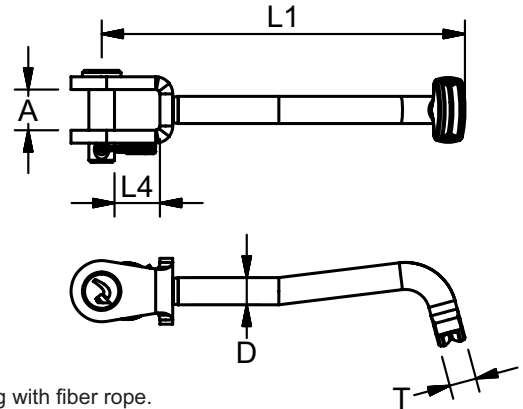


**MARINE**  
RIGGING HARDWARE

## “T” FORK

High Polished Stainless Steel - AISI 316

| ART. NO. | L1    | L4    | D     | A     | T     | PIN SIZE | KG/100 | PACK |
|----------|-------|-------|-------|-------|-------|----------|--------|------|
| 613406   | 83,5  | 10,00 | 6,35  | 9,50  | 6,35  | 6,0      | 3,8    | BULK |
| 613408   | 93,0  | 11,00 | 7,50  | 11,00 | 7,50  | 8,0      | 7,4    | BULK |
| 613495   | 104,5 | 14,25 | 9,00  | 12,00 | 9,00  | 9,5      | 11,5   | BULK |
| 613412   | 130,0 | 19,50 | 12,58 | 14,00 | 12,58 | 12,0     | 22,3   | BULK |



## “T” ROPE EYE

High Polished Stainless Steel - AISI 316

The “T” Rope Eye is used for replacing existing wire rig with fiber rope.

| ART.NO. | ROPE SIZE | L1    | L2   | B1    | B2   | D     | T     | BL   | KG/100 | PACK |
|---------|-----------|-------|------|-------|------|-------|-------|------|--------|------|
| 616506  | 3         | 81,5  | 26,0 | 27    | 15   | 6,35  | 6,3   | 800  | 3,8    | BULK |
| 616507  | 4         | 85,0  | 26,0 | 27,00 | 15   | 7,50  | 7,50  | 1800 | 4,1    | BULK |
| 616509  | 5         | 99,5  | 34,0 | 38,00 | 22,0 | 9,00  | 9,00  | 2800 | 8,7    | BULK |
| 616512  | 6         | 109,0 | 34,0 | 38    | 22,0 | 12,58 | 12,58 | 4100 | 10,2   | BULK |

Note: All break loads are determined by ring & terminal

