

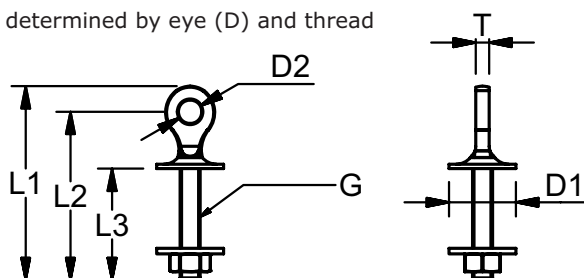


EYE BOLTS FORGED

High Polished Stainless Steel - AISI 304

ART. NO.	THREAD G	L1	L2	L3	D1	D2	T	BL	KG/100	PACK
310630	M6	53	46	30	25,0	6,5	4,0	1300 KG	1,3	10
310660	M6	83	76	60	25,0	6,5	4,0	1300 KG	2,1	10
310835	M8	65	58	35	25,0	8,5	5,0	2400 KG	3,3	10
310880	M8	110	104	80	25,0	8,5	5,0	2400 KG	5,0	10
311050	M10	87	75	50	30,0	10,5	6,0	3500 KG	8,2	10
311000	M10	137	125	100	30,0	10,5	6,0	3500 KG	11,0	10

Note: All breakloads are determined by eye (D) and thread

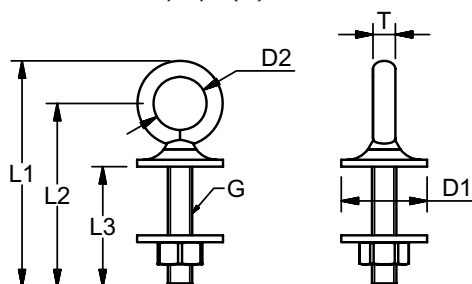


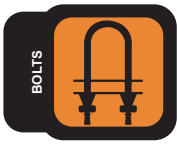
EYE BOLTS WELDED

High Polished Stainless Steel - AISI 304

ART. NO.	THREAD G	L1	L2	L3	D1	D2	T	BL	KG/100	PACK
370630	M6	57	46	30	25	13	5,0	1300	1,8	10
370640	M6	66	56	40	25	13	5,0	1300	2,8	10
370650	M6	76	62	50	25	13	5,0	1300	3,0	10
370660	M6	87	76	60	25	13	5,0	1300	2,6	10
370600	M6	126	115	100	25	13	5,0	1300	3,7	10
370835	M8	66	53	35	25	15	6,0	2400	3,8	10
370850	M8	80	68	50	25	15	6,0	2400	4,9	10
370880	M8	110	98	80	25	15	6,0	2400	5,5	10
370800	M8	130	118	100	25	15	6,0	2400	6,5	10
371050	M10	85	70	50	30	16	7,0	3500	8,7	10
371000	M10	135	120	100	30	16	7,0	3500	11,0	10
371250	M12	90	74	50	30	18	6,0	4500	10,2	10
371210	M12	140	124	100	30	18	9,0	4500	15,0	10
371216	M12	200	184	160	30	18	9,0	4500	19,0	10

Note: All breakloads are determined by eye (D) and thread





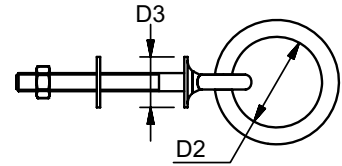
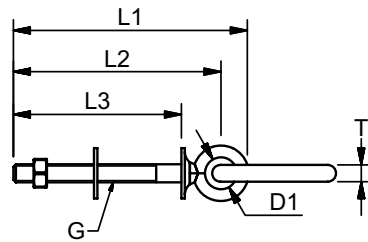
MARINE
RIGGING HARDWARE

EYE BOLTS WITH RING

High Polished Stainless Steel - AISI 304

ART. NO.	THREAD G	L1	L2	L3	D1	D2	D3	T	BL	KG/100	PACK
380630	M6	57	46	30	13	30	25	5	950 KG	4,4	10
380660	M6	87	76	60	13	30	25	5	950 KG	4,9	10
380835	M8	66	53	35	15	40	25	6	1500 KG	7,3	10
380880	M8	111	98	80	15	40	25	6	1500 KG	8,8	10
381050	M10	85	70	50	16	45	30	7	2200 KG	13,6	10
381000	M10	135	120	100	16	45	30	7	2200 KG	16,3	10
381210	M12	140	124	100	18	50	30	10	3300 KG	28,2	10
381216	M12	200	184	160	18	50	30	10	3300 KG	32,1	10

Note: All breakloads are determined by ring (D2).

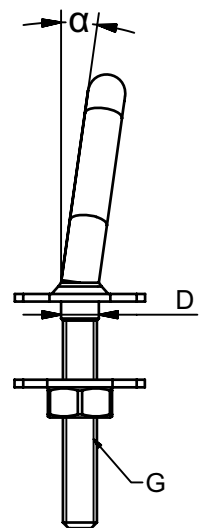
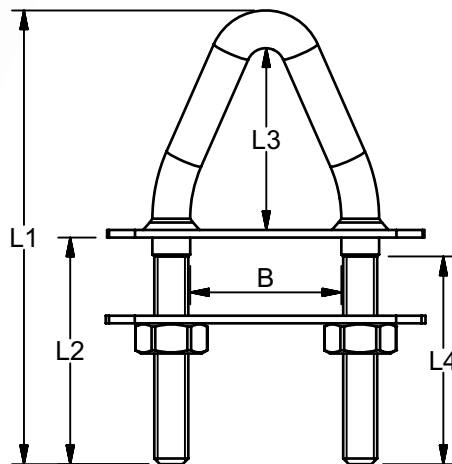


"V" BOLTS

High Polished Stainless Steel - AISI 316

ART. NO.	THREAD G	L1	L2	L3	L4	α	B	D	BL	KG/100	PACK
408500	M8	100	50	40	45	0	33	8,0	3500 KG	12,5	5
408508	M8	100	50	40	45	8	33	8,0	3500 KG	12,5	5
408518	M8	100	50	40	45	18	33	8,0	3500 KG	12,5	5
410600	M10	120	60	48	55	0	40	10,0	5100 KG	15,0	5
410608	M10	120	60	48	55	8	40	10,0	5100 KG	15,0	5
410618	M10	120	60	48	55	18	40	10,0	5100 KG	15,0	5

Note: All breakloads are determined by thread.



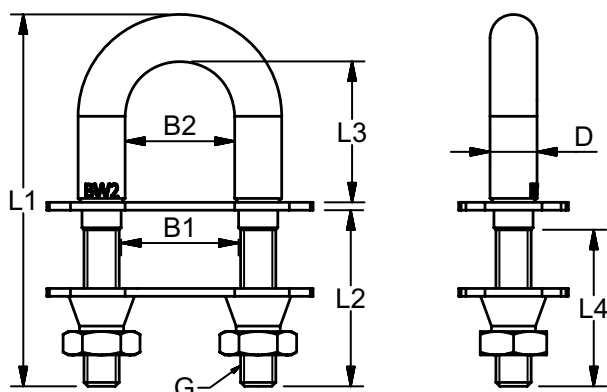
ANTITHEFT "U" BOLTS

High Polished and Hard Chrome Plated Stainless Steel - AISI 316/ 1.4401

Blue Waves class 3 antitheft U-bolt is the most sold of its kind on the European market because of the high quality and resistance against cut through as well as corrosion

ART. NO.	THREAD G	D	L1	L2	L3	L4	B1	B2	BL	KG/100	PACK	BREAK NUT
Class 3 certified												
431265	M12	14	122	65	41	48	34,5	32,5	5100 KG	31	1	50 Nm
Class 2 certified												
431045	M10	12	95	45	38	40	30,0	28,0	3500 KG	22	1	50 Nm

Note: All breakloads are determined by thread.



"U" BOLTS

High Polished Stainless Steel - AISI 316

ART. NO.	G	L1	L2	L3	L4	B	D	BREAK LOAD	KG/100	PACK	PCS
340435	M4	66	35	25	30	26	4,0	750 KG	2,1	25	
340535	M5	67	35	25	30	25	4,4	900 KG	2,6	25	
340635	M6	67	35	26	30	27	5,3	1250 KG	4,5	5	
340650	M6	84	50	26	30	27	5,3	1250 KG	5,7	5	
340835	M8	71	35	26	30	25	7,1	1750 KG	7,2	5	
340850	M8	86	50	26	30	25	7,1	1750 KG	9,7	5	
340880	M8	116	80	26	45	25	7,1	1750 KG	11,8	5	
348840	M8	80	40	30	32	42	8,0	1750 KG	12,4	5	
348850	M8	90	50	30	32	42	8,0	1750 KG	13,2	5	
341045	M10	95	45	40	40	30	10,0	3500 KG	18,4	5	
341060	M10	110	60	40	35	30	10,0	3500 KG	20,4	5	
341010	M10	150	100	40	85	30	10,0	3500 KG	25,0	5	
341280	M12	122	80	30	85	35	10,8	5100 KG	29,0	5	

Note: All breaksloads are determined by thread.

