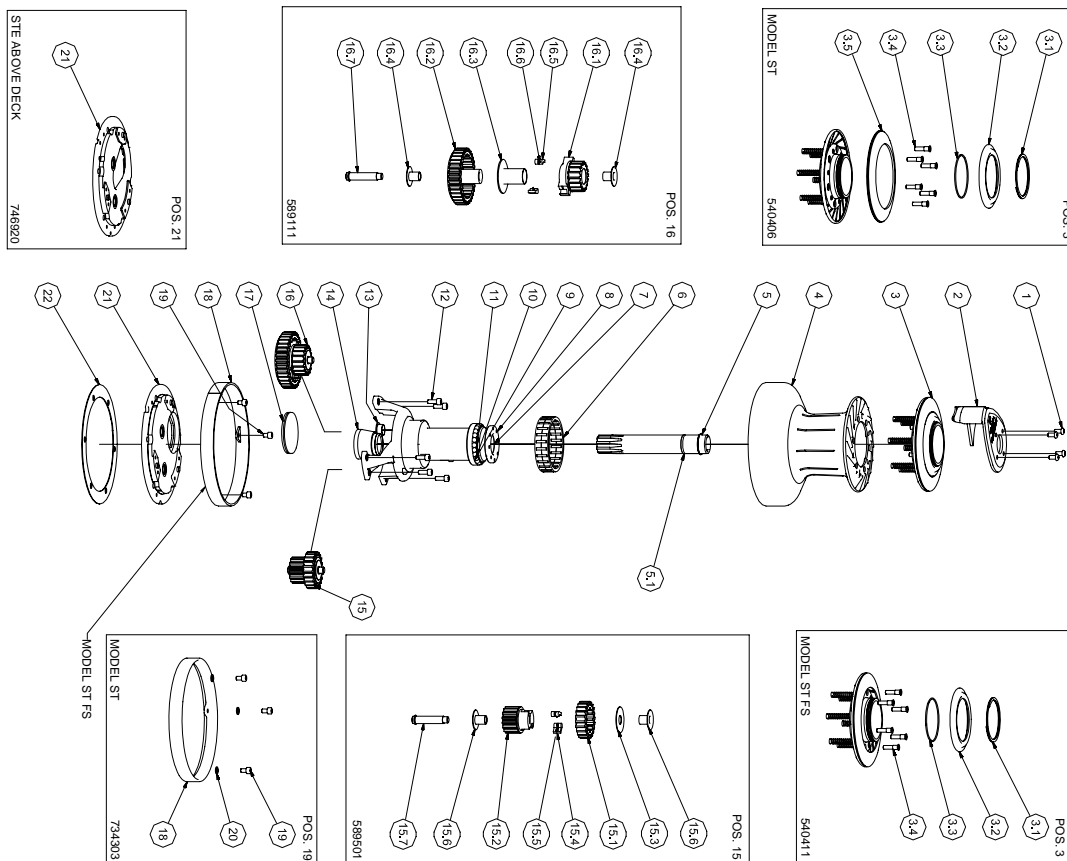


**ANDERSEN Winch 52ST/52ST FS**  
 VERSION 3.0/VERSION 3.0.F



Manufactured by:

Fr. Andersens Maskinfabrik A/S

DK – 7100 Vejle Denmark

[www.andersenwinches.com](http://www.andersenwinches.com)

E-mail: [info@andersenwinches.com](mailto:info@andersenwinches.com)



VARENØ. 710321



**SERVICE KIT 21**

FOR WINCH 52ST/52ST FS

Version 3.0 08/2009 - Part. No. 710021

The service kit consists:

QTY.	DESCRIPTION	PART. NO.
2	Screw	ISO 7380-A4-M6X16
2	Screw	DIN912-A4-M6X8
2	Screw	DIN912-A4-M6X10
2	Washer	DIN127-A4-ø6,2
4	Spring	713300
4	Pawl	713200
2	Ball, Stainless steel	526301
2	Ball POM	566302
1	Retaining ring	526600
2	Bushing	981410

Please unfold the this page to see the Complete Part Lists and Exploded Views for the winches.

Note! Variations can occur due to changes of the winch specifications.

# PARTS LIST

52ST ver. 3.0 – 52ST FS ver. 3.0.F

POS.	QTY.	DESCRIPTION	ART. NO.
1	4	Screw	ISO7380-A4-M6x12
2	1	Self-tailing arm	594100
3	1	Self-tailing top complete (standard)	540406
3	1	Self-tailing top complete (full stainless)	540411
3.1	1	Cir clip	591000U
3.2	1	Top ring	521305
3.3	1	O-ring	RD100431
3.4	6	Screw	585160
3.5	1	Disc	526910
4	1	Drum complete	734401
5	1	Drive shaft complete	782811
5.1	1	O-ring	RD100302
6	1	Roller bearing complete	525905
7	1	Bushing <i>Not removeable</i>	716503
8	1	Baseplate	742310
9	12	Ball, POM	526302
10	11	Ball, stainless steel	526301
11	1	Retaining ring	526600
12	6	Screw	DIN912-A4-M6x16
13	1	Bushing	877000
14	1	Bushing	734900
15	1	Small Ratchet gear complete	589501
15.1	1	Ratchet gear wheel	525200
15.2	1	Gear wheel	525103
15.3	1	Disc	524300
15.4	2	Pawl	713200
15.5	2	Arm spring	713300
15.6	2	Bushing	981410
15.7	1	Shaft for Ratchet gear	980410
16	1	Ratchet gear complete	589111
16.1	1	Gear wheel	525403
16.2	1	Ratchet gear wheel	525300
16.3	1	Bushing	525500
16.4	2	Bushing	981410
16.5	2	Pawl	713200
16.6	2	Arm spring	713300
16.7	1	Shaft for Ratchet gear	980410
17	1	Plug for deck plate	783900
18	1	Base cover (standard)	734303
18	1	Base cover (full stainless)	734321
19	6	Screw	DIN912-A4-M6x10
20	3	Washer	DIN127-A4-Ø6,2
21	1	Deckplate for Above Deck compact motor	746920
		Deckplate for Below Deck motor and manual	
21	1	operated winch	746910
22	1	Sealing for Aluminium deck <i>Not included</i>	746990
	1	<b>Service kit No 21</b>	<b>710021</b>