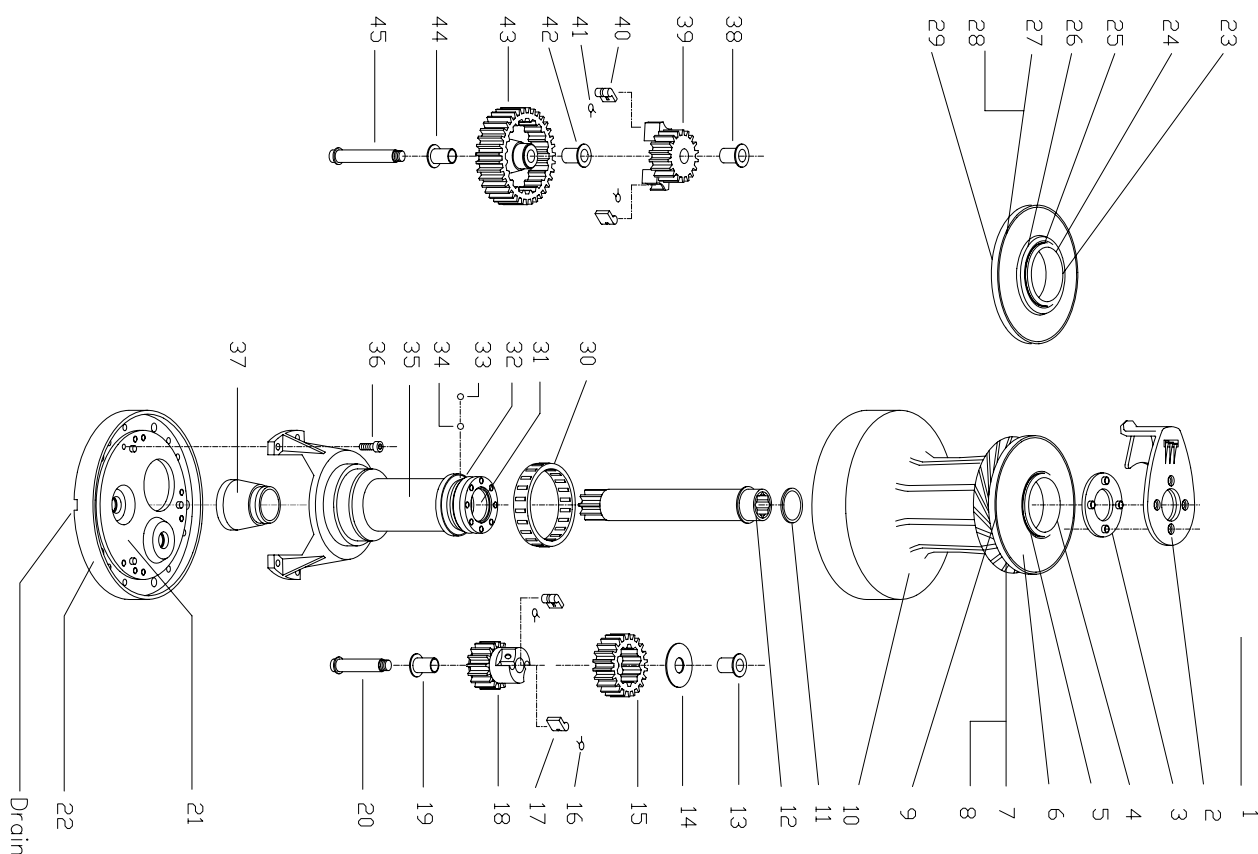


ANDERSEN Winch 46ST
Version 3



Manufactured by:

Fr. Andersens Maskinfabrik A/S

DK – 7100 Vejle Denmark

www.andersenwinches.com

E-mail: info@andersenwinches.com



SERVICE KIT 17
FOR WINCH 46 ST 1997 - 7/2006
Part. No. 710017
The service kit consists:

QTY.	DESCRIPTION	PART. NO.
8	Spring	713300
4	Pawl	713200
5	Bushing	981400
2	Ball Stainless	724900
2	Ball POM	724902
1	Circlip	523500
1	Circlip	590300U
1	Screw M6x16	ISO7380-A4-M6X16
1	Screw M6x16	583600
1	Screw M6x12	DIN912-A4-M6X12

Please unfold the this page to see the Complete Part List and Exploded View for the winch.

Note! Variations can occur due to changes of the winch specifications.

46ST/ - 46ST FS PARTS LIST

Version 3.1

POS.	QTY.	DESCRIPTION	ART. NO.
1.	4	Screw	ISO 7380-A4-M6×16
2.	1	Self-tailing arm	734315
3	1	Washer for self-tailing arm	524101
4.	1	Consol for Self-tailing 4-10mm	781900
4.	1	Consol for Self-tailing 8-14mm	781010
5.	1	Circlip	590300U
6.	1	Disc spring, standard	712200
7.	1	Driving plate, standard	524001
8.	4	Screw M6, standard	585100
9.	1	Self-tailing top 4-10mm. Cpl., standard	544400
9.	1	Self-tailing top 8-14mm. Cpl., standard	544500
10.	1	Drum complete 4-10mm, standard	754000
10.	1	Drum complete 8-14mm, standard	735904
10.	1	Drum complete 8-14mm, full stainless	734102
11.	1	O-ring	RD100302
12.	1	Drive shaft cpl.	711200
13.	1	Bushing	981400
14.	1	Washer	524300
15.	1	Ratchet gear	523000
16.	2	Arm spring	713300
17.	2	Pawl	713200
18.	1	Pawl gear	523802
19.	1	Bushing	981400
20.	1	Shaft, short	980300
21.	1	Lower base	748101
22.	1	Base cover, standard	735300
22.	1	Base cover, full stainless	735320
23.	1	Consol for Self-tailing 4-10mm	781900
23.	1	Consol for Self-tailing 8-14mm	781010
24.	1	O-ring (only for full stainless model)	RD100430
25.	1	Circlip	590300U
26.	1	Top ring, full stainless	595010
27.	1	Driving plate, full stainless	595416
28.	4	Screw M6, standard	585100
29.	1	Self-tailing top 8-14mm. Cpl., full stainless	544510
30.	1	Roller bearing cpl.	727400
31.	1	Bushing	<i>Not removable</i> 716503
32.	1	Retaining ring	<i>Not removable</i> 523500
33.	14	Ball, stainless steel	724900
34.	14	Ball, POM	724902
35.	1	Upper base	750701
36.	8	Screw	DIN 912-A4-M6×12
37.	1	Bushing	<i>Not removable</i> 734900
38.	1	Bushing	981400
39.	1	Pawl gear	523902
40.	2	Pawl	713200
41.	2	Arm spring	713300
42.	1	Bushing	981400
43.	1	Ratchet gear	541901
44.	1	Bushing	981400
45.	1	Shaft, long	980400