

MOUNTING INSTRUCTION LINE TENDER™, FIXED MOUNTING

1. Remove circlip (1).
2. Remove pos. 2 and 9. The base plate (10) is now ready for the next step.
3. Mark location of the bolt holes using the base plate (10) as a template.
4. Remove the base plate. Be sure that no dust comes into contact with the Line Tender™ while drilling the bolt holes.
5. Drill the bolt holes ø6.5mm.
6. Clean the area.
7. Apply a light coat of bedding compound, ensuring that each hole is bedded.
8. Fasten the base plate into place using 4 pcs M6 countersunk head screws. Use large washers or a backing plate.
9. Assemble in reverse order.
10. Check that the Line Tender™ is functioning correctly.

The Line Tender™ is designed for use with 12 mm line size only.

Special function: The Line Tender™ is from the factory set to be completely locked with the pawl controller (9) in the centre position. By rotating the base (7) 90°, the centre position of the pawl controller will be changed to a free wheel function in both directions.

SERVICE INSTRUCTION LINE TENDER™, FIXED MOUNTING

Maintenance interval 1-2 years, depending on operating conditions.

1. Remove circlip (1).
2. Remove drum (2)
3. Remove roller bearing (4)
4. Remove pawl controller (9)
5. Clean all moving parts with benzine. Please note. Cleaning and re-greasing of shaft (3) requires the baseplate to be removed from the deck surface.
6. Check pawls & springs for wear and replace if necessary.
7. Reassemble the Line Tender™ lightly greasing all moving parts. We strongly recommend to use ANDERSEN Winch Grease for this purpose.
8. Check that the Line Tender™ is functioning correctly.

Service Kit No. 20 (part no. 700020) contains service parts for this product

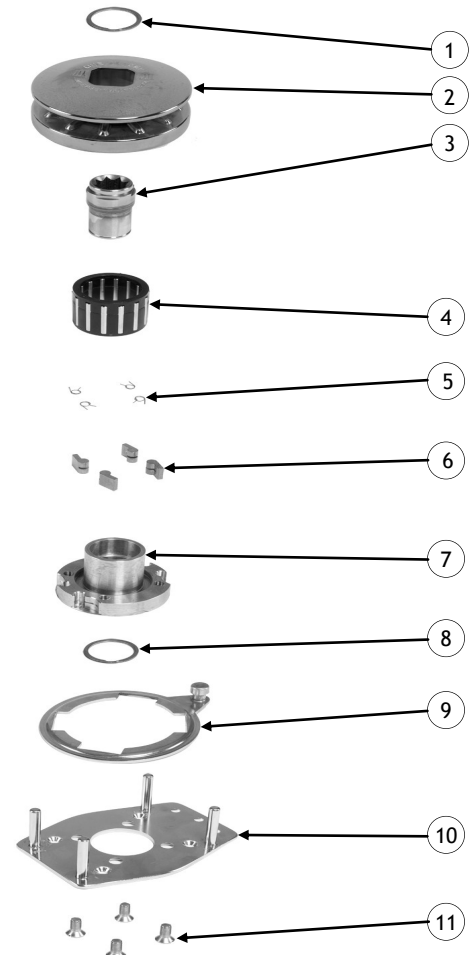
PARTS LIST LINE TENDER™, FIXED MOUNTING ver. 1.0

POS	QTY	DESCRIPTION	PART NO.
1	1	CIRCLIP	712800
2	1	DRUM	521500
3	1	SHAFT	521100
4	1	ROLLER BEARING 30/42/H34,5	712903
5	4	PAWL SPRING	713300
6	4	PAWL	713200
7	1	BASE	520200
8	1	CIRCLIP	712800
9	1	PAWL CONTROLLER	521000
10	1	BASE PLATE	521402
11	4	SCREW M8 X 16MM	DIN963-A4-M8X16

WARRANTY

Refer to our website www.ronstan.com/warranty
for our warranty terms and conditions

EXPLODED VIEW LINE TENDER™, FIXED MOUNTING



ALL WINCHES



Read All Safety Notices and Product Manuals

Do not install or operate this winch before reading and fully understanding the contents of this Safety Notice Sheet and the Product Manual.



Stay Alert When Operating

Andersen winches are very powerful and have the potential to cause significant damage and/or serious injury if used improperly or without due caution and vigilance.



Operators Must Be Trained

Help prevent significant damage and/or serious injury by ensuring any person operating a winch has a thorough understanding of its proper operation and is aware of the potential hazards involved. As a minimum, all winch operators must read and understand this Safety Notice Sheet and the Product Manual. Particular attention is drawn to the following points:

- Children and others not qualified to operate an electric winch must be kept at a safe distance from the winch and any rigging or fittings that are under load.
- Long hair and/or loose clothing must be tied back to avoid being caught in the winch.
- In the event of a rope override or other fault, stop the winch and turn off power before attempting to resolve the problem.



Avoid Accidental Operation

Remove winch handles and turn off power to the winch when not in use to help avoid unsupervised or unintentional operation. Failure to do so could result in significant damage and/or serious injury.



Maintenance

Turn off power to the winch before performing any maintenance or service tasks. Failure to do so could result in significant damage and/or serious injury.



Lifting Operations

The winch must not be operated with the rope in the self tailer when used in any kind of lifting operation.

Any lifting operations should be conducted by two persons in order to maintain constant visual contact with the object being lifted.

Furthermore the selftailer must not be used as a cleat for a rope used to lift or suspend any object. The rope must be secured properly by tying off, or leading to a suitable fitting such as a cleat or bollard.

Failure to observe these precautions could result in serious injury or death.

DO NOT DISCARD

Part nr. 710223, 9. februar 2012

WORLD WIDE DISTRIBUTION & SERVICE

(FOR UPDATED DISTRIBUTOR LIST, PLEASE SEE
WWW.ANDERSENWINCHES.COM)



Manual
LINE TENDER™
FIXED MOUNTING
Ver. 1.0

